



THE FOREIGN SERVICE
OF THE
UNITED STATES OF AMERICA

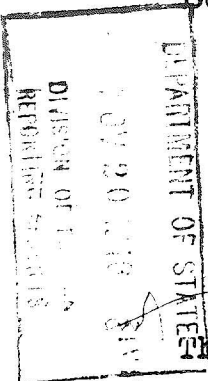
No. 2378

American Embassy
Habana, November 4, 1946

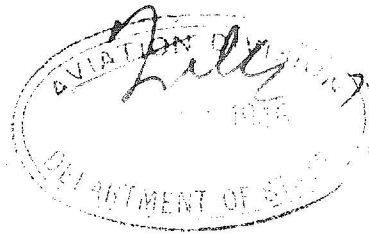
RESTRICTED

Subject: Descriptions of Airports in Cuba

DC/R



The Honorable
The Secretary of State,
Washington, D. C.

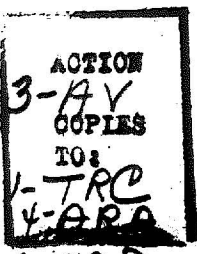


Sir:

I have the honor to forward herewith data on the following airports in Cuba, which have been received through the courtesy of the Military Air Attaché:

- Camp Columbia Field, Habana.
- Batista Airport, San Antonio de los Baños.
- Santa Clara Airport, Santa Clara.
- Mayajigua Airport, Mayajigua.
- Cienfuegos Municipal Airfield, Cienfuegos.
- Caibarien Airport, Caibarien.
- Kawama Airport, Varadero.
- Barnabé Sanchez Adan Airport, Camaguey.
- Antilla Airport, Antilla.
- Bayamo Airport, Bayamo.
- Carter Field, U. S. Naval Air Station, Guantanamo.
- Cunagua Airport, Cunagua.
- Holguin Airport, Holguin.
- Jesus Maria Field, Santiago de Cuba.
- Manzanillo Airport, Manzanillo.
- McCalla Field, U. S. Naval Air Station, Guantanamo.
- Preston Airport, Preston.
- Rancho Boyeros Airport, Rancho Boyeros.
- San Julian Airfield, San Julian.
- Ignacio Agramonte Airport, Camaguey.
- Presidio Medele Airfield, Nueva Gerona, Isle of Pines.
- Santa Fe Municipal Airport, Santa Fe, Isle of Pines.
- Senado Airport, Senado.
- Central Manatí Airfield, Central Manatí.

Photographs are attached of the airports at Habana, San Antonio de los Baños, Santa Clara, Mayajigua, Cienfuegos, Caibarien, Varadero, Camaguey (Barnabé Sanchez Adan Airport), Antilla, Bayamo, Guantanamo (Carter and McCalla Fields), Cunagua, Holguin, Santiago de Cuba, Manzanillo, and Preston. A photograph of the airport



6-OED
1-CIG
3 War
1 Navy
8 Com
3 CAP

11/20/46

337.7962/11-446

NOV 26 1946

FILED 337.7962/11-4

RESTRICTED

-2-

at San Julian was forwarded with the Embassy's report number 411 of October 28, 1946, entitled "Aviation Report, Cuba - Third Quarter 1946", while photographs of the airports at Rancho Boyeros, Nueva Gerona and Camaguey (Ignacio Agramonte Airport) were forwarded with Embassy's despatch number 346 of October 17, 1945, entitled "Photographs of Various Airports in Cuba".

Respectfully yours,

For the Chargé d'Affaires ad interim:


George C. Howard
Commercial Attaché

GCHoward/jw

File no. 879.6

Original and hectograph to Department.

Enclosures:

1. Data on Camp Columbia Field, Habana.
2. Data on Batista Airport, San Antonio de los Baños.
3. Data on Santa Clara Airport, Santa Clara.
4. Data on Mayajigua Airport, Mayajigua.
5. Data on Cienfuegos Municipal Airfield, Cienfuegos.
6. Data on Caibarien Airport, Caibarien.
7. Data on Kawama Airport, Varadero.
8. Data on Bernabé Sanchez Adan Airport, Camaguey.
9. Data on Antilla Airport, Antilla.
10. Data on Bayamo Airport, Bayamo.
11. Data on Carter Field, U. S. Naval Air Station, Guantanamo.
12. Data on Cunagua Airport, Cunagua.
13. Data on Holguin Airport, Holguin.
14. Data on Jesús Maria Field, Santiago de Cuba.
15. Data on Manzanillo Airport, Manzanillo.
16. Data on McCalla Field, U. S. Naval Air Station, Guantanamo.
17. Data on Preston Airport, Preston.
18. Data on Rancho Boyeros Airport, Rancho Boyeros.
19. Data on San Julian Airfield, San Julian.
20. Data on Ignacio Agramonte Airport, Camaguey.
21. Data on Presidio Modelo Airfield, Nueva Gerona, Isle of Pines.
22. Data on Santa Fe Municipal Airport, Santa Fe, Isle of Pines.
23. Data on Senado Airport, Senado.
24. Data on Central Manatí Airfield, Central Manatí.

RESTRICTED

DATA ON CAMP COLUMBIA FIELD, HABANA, CUBA

Name and Location: Camp Columbia (Teniente Brihuega) Field.
7 miles SW of Habana harbor, 1 mile
from coast.

Geographic Position: Latitude: 23° 06' N. Longitude: 82° 26' W.

Altitude: 45'

Magnetic Variation: 3 1/2° E.

Landmarks: Large military post adjoins field to
E and NE.

Dimensions: Runways: 5000' x 100' (800 - 2600)
4000' x 100' (300 - 2100) under
construction.

Surface: Field and runway are sod with rock coral
foundation. Field suitable for landing
after heavy rains. C-47 type used re-
gularly, B-24s and B-17s in emergency.

Markings: Large-headquarters building on NE side
of field. Hangars and shops at NW
corner. Runways outlined.

Lighting: Portable lighting system available, pro-
viding adequate notification is given.
All obstructions marked by red lights.
Cuban Air Corps makes habitual night
landings.

Obstructions: Ground rises rapidly to the E and NE
to 100'.

Hangars: 3 hangars: 120' x 59' of concrete and
steel. Doors: 15' high, 59' wide.

Repair Facilities: Complete repair facilities for AT-6,
BT-13, PT-17, C-45 aircraft. Cuban
Air Corps shops at field.

Fuel and Oil: Fuel: 91 octane, 20,000 gals. stored
underground. Oil: 1120 grade stored
in drums. Normal quantity on hand,
5,000 gallons.

Communications:

RESTRICTED

Enclosure No. 1 to despatch
No. 2378 dated November 4,
1946, Embassy at Habana.

Communications: Columbia Tower: 4495 kc receive and transmit voice (0600-1800). Columbia Operations: 5800 kc transmit, 4495 kc receive voice (give local weather and general weather every 15 minutes in clear).

Weather Service: At field.

Transportation: Buses, street cars and taxis to town.

Personnel Accommodations: Quarters and messing facilities at field. Hotels in Habana reasonable rates except during winter season.

Prevailing Winds: NNE, average 20 mph.

Precipitation: Average 50" yearly.

Temperature: 80° F mean average.

Visibility: Good, except in thunderstorms.

Operated by: Cuban Army Air Corps.

Customs: Customs in Habana.

Remarks: Field has high center and is rough. A 4000-ft, 300° - 210° runway is under construction.

Civil Operations: Aerovias "Q" uses regularly with C-47s.

Hospitals and First Aid: First aid at field. Large adequate Army hospital 1 mile from field.

Railroads: None.

Highways: Roads between field and Habana in good condition.

Waterways: Habana harbor 7 miles from field.

Nearest Seaport: Excellent seaport in Habana harbor.

Electric Power: From city of Habana. Alternate current at field. 220 volts, 60 cycles, single phase and three phase. Emergency generators at field.

Location of Facilities:

RESTRICTED

Enclosure No. 1 to despatch
No. 2378 dated November 4,
1946, Embassy, Habana.

Location of Facilities: Three hangars on NW side of field.
Two repair shops in NW corner of
field. Administration building and
quarters in previous hotel. Large
empty orphan asylum on W of field,
easily convertible to storage space.

Garrisoning Facilities
and Possibilities:

Cuban Army post 1 mile from field;
will accommodate estimated 5000
troops. Airfield itself will
accommodate 1,000. Large camp
areas available in immediate
vicinity.

Expansion Ability:

Airfield can be extended to 7000'.

Air Units:

Cuban Air Corps headquarters.

Defensive Installations: None.

Defensive Personnel: None.

PHOTOGRAPH



Copy/dts

RESTRICTED

DATA ON BATISTA AIRPORT, SAN ANTONIO DE LOS BAÑOS,
HABANA PROVINCE, CUBA.

Name and Location: Batista Airport, 1-1/2 miles SW of San Antonio de los Baños. 16 airline miles SW of Habana.

Geographic Position: Latitude: 22° 53' N. Longitude: 82° 30' W.

Altitude: 153.02 ft.

Magnetic Variation: 3° 28' E.

Landmarks: 1-1/2 miles SW of San Antonio de los Baños.

Dimensions: 3 runways: #5-23 - 7270' x 150' (NE-SW)
#11-29 - 7000' x 150' (SE-NW)
#18-36 - 7000' x 150' (S-N)
Field roughly square, 8000' x 9500'

Surface: Runways, taxiways and parking aprons, concrete; 120,000 lb. wheel load.

Markings: Runways well outlined. Wind indicator S of runway #5, near Operations Building.

Lighting: White beacon light, B-2 field lighting equipment installed all runways. No boundary, flood or approach lights. (Field on stand-by status, no lighting available at present time).

Obstructions: Incinerator stack, approximately 300-350 yards SE of runway #36.

Hangars: Two double-nose hangars for 4- engined aircraft.

Repair Facilities: None.

Fuel and Oil: 20,000 gals. gasoline underground storage. 2 service pits, 12,500 gals. each. No service available at present.

Communications: Tower: Receive 4495 kc, transmit 383 kc. Radio Range: Ident. "SA", freq. 382 kc. Courses: 50°, 230°, 130°, 310° mag. Located 2.3 miles SW of runway #5.

Weather Service: None.

Transportation: None.

Personnel Accommodations:

RESTRICTED

Enclosure No. 2 to despatch
No. 2378 dated November 4,
1946, Embassy, Habana.

Personnel Accommodations: Field on stand-by status, no quarters available. Adequate housing in Habana hotels.

Prevailing Winds: Usually 90°, average 10-15 mph.

Precipitation: Yearly average 57". Normally thunder showers of short duration.

Temperature: Yearly average 77° F.

Visibility: Generally excellent, 7 miles or better 87% of time.

Operated by: Cuban Air Corps (on stand-by status).

Customs: None. Rancho Boyeros closest.

Remarks: This is the best airfield for military operations in Cuba.

Civil Operations: None.

Hospitals and First Aid: None.

Railroads: Standard gauge, siding at airport.

Highways: Two-lane highway to Habana, all-weather surface, in poor condition.

Waterways: None near airport.

Nearest Seaport: Habana harbor.

Electric Power: Primary source from Habana at 33,000 volts. Stand-by plant 1,000 H. P., 720 KW.

Location of Facilities: Hangars and repair facilities are dispersed N and W of #5 runway, about 1 mile taxiing from Operations Building. Administration and office buildings within 5 minutes walk of field. Receiver antennae located at Operations Building. Transmitter antennae W end of field, back of hospital, approximately 1/2 mile from Operations Building.

Garrisoning Facilities and Possibilities:

RESTRICTED

Enclosure No. 2 to despatch
No. 2378 dated November 4,
1946, Embassy, Habana.

Garrisoning Facilities
and Possibilities:

Quarters for 2800 enlisted men in
barracks, but no housekeeping equip-
ment available as field is on stand-by
status.

Expansion Ability:

Railway stops extension runways #18
and #11 northerly and depression
southerly and easterly. Runway #5 can
be extended westerly.

Air Units:

None.

Defensive Installations: None.

Defensive Personnel: None.

PHOTOGRAPH

20554 MA0505 15OCT46 6 7/8"
2253N 8230W BATISTACUBA REST

Copy/dts

RESTRICTED

DATA ON SANTA CLARA AIRPORT, SANTA CLARA, LAS VILLAS
PROVINCE, HABANA.

Name and Location: Santa Clara Airport. Located one mile due W of city.

Geographic Position: Latitude: 22° 24' N. Longitude: 79°59' W.

Altitude: 400 ft.

Magnetic Variation: 2° E.

Landmarks: City due E of airport. Cemetery on eastern edge of airport.

Dimensions: One runway: 100' x 3600' (90° - 270°).

Surface: Hard packed, oiled clay. Normally good after light rain. Can accommodate up to and include C-47 type aircraft.

Markings: Runway outlined in white. Cement warm-up and turn-around stand at western end of runway.

Lighting: None.

Obstructions: Take-off to the E is over city.

Hangars: None.

Repair Facilities: None.

Fuel and Oil: None.

Communications: Telephone, radio and telegraph in city. Expreso Aereo is installing a control tower.

Weather Service: None.

Transportation: Taxis from city.

Personnel Accommodations: Hotels in city. Quality very poor.

Prevailing winds: E; average 15 miles per hour.

Precipitation: Yearly average 40 inches.

Temperature: Mean average 80°.

Visibility:

RESTRICTED

Enclosure No. 3 to despatch
No. 2378 dated November 4,
1946, Embassy, Habana.

Visibility: Normally very good except for early
morning ground fogs.

Operated by: Expreso Aereo Inter-Americano.

Customs: None.

Remarks: Airport used daily by Expreso Aereo
Inter-Americano.

PHOTOGRAPHS



Copy/dts

DATA ON MAYAJIGUA AIRPORT, MAYAJIGUA, LAS VILLAS
PROVINCE, CUBA

Name and Location: Mayajigua Airport is located 3 miles SE of city.

Geographic Position: Latitude: 22° 12' N. Longitude: 79° 04' W.

Altitude: 30 feet.

Magnetic Variation: 2° E.

Landmarks: 3 miles SE of city, low hills to immediate south.

Dimensions: One runway: 3100' x 30' (60° - 240°).

Surface: Sod field which is rough. Soft when wet. Can accommodate C-47s. Expreso Aereo uses daily with Lockheed 12.

Markings: None.

Lighting: None.

Obstructions: Rolling hills to 500', 7 miles south and southeast.

Hangars: None.

Repair Facilities: None.

Fuel and Oil: None.

Communications: Telephone and telegraph in city.

Weather Service: None.

Transportation: None.

Personnel Accommodations: Accommodations for 70 at spa located at airfield, food good, quarters adequate.

Prevailing Winds: Normally from 60° at 8 mph.

Precipitation: 50 inches yearly.

Temperature: 75° mean average.

Visibility: Good except during thunderstorms.

RESTRICTED

Operated by:

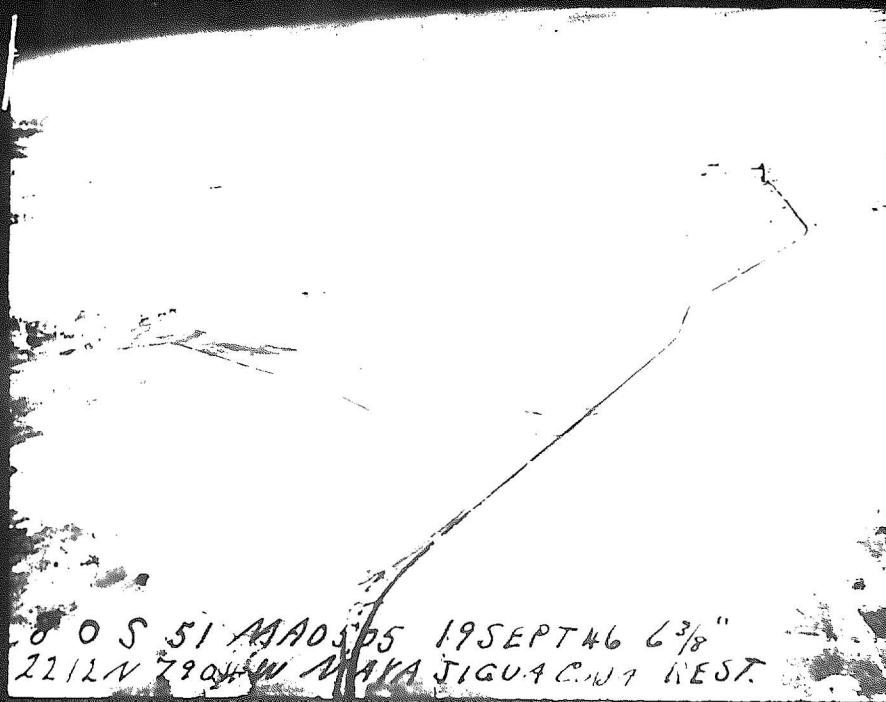
Enclosure No. 4 to despatch
No. 2378 dated November 4,
1946, Embassy at Habana.

Operated by: San José del Lago, vacation resort.

Customs: None.

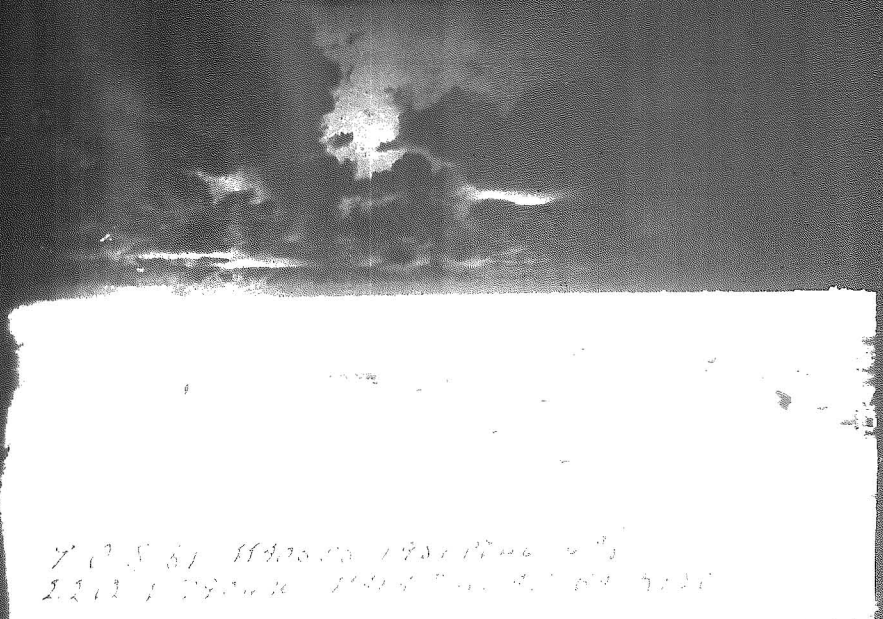
Remarks: The strip was made to accommodate air
passengers to this resort, which is famous
for its mineral baths. Expreso Aereo
gives daily air service.

PHOTOGRAPHS



RESTRICTED

Copy/dts



NOVEMBER 4, 1940, from the Embassy at Habana

DATA ON CIENFUEGOS MUNICIPAL AIRFIELD, CIENFUEGOS,
LAS VILLAS PROVINCE, CUBA

Name and Location: Cienfuegos Municipal Airfield is located on the NE edge of Cienfuegos.

Geographic Position: Latitude: 22° 08' N. Longitude: 80° 27' W.

Altitude: 50 feet.

Magnetic Variation: 2° E.

Landmarks: City to SW.

Dimensions: Runways: 100' x 2400 (170° - 350°) - will extend to 4000'.
100' x 2400' (80° - 260°) - under construction.

Surface: Dirt and very soft when wet. Will accommodate C-47 when dry.

Markings: Contrast of bare dirt runways to green surroundings.

Lighting: None.

Obstructions: None.

Hangars: None.

Repair Facilities: None.

Fuel and Oil: PAA keeps about 20 drums of 91 octane available.

Communications: PAA voice 2870 send and receive. Telephones and telegraph in city.

Weather Service: None.

Transportation: Taxis from town.

Personnel Accommodations: Hotels in city of poor quality.

Prevailing Winds: Normal NE at 10 mph.

Precipitation: 50" annually.

Temperature: 80° mean average.

Visibility: Usually last airfield to close in central Cuba. Visibility good except during thunderstorms.

RESTRICTED

Operated by:

Enclosure No. 5 to despatch
No. 2378 dated November 4,
1946, Embassy, Habana.

Operated by: City of Cienfuegos.

Customs: Airport of entry.

Remarks: Municipality of Cienfuegos is constructing
this field adjoining old PAA airfield of
Jaime Gonzalez (tri-motored Fords only).
Construction proceeds slowly under poor
municipal management.

PHOTOGRAPHS

Copy/dts

RESTRICTED

DATA ON CAIBARIEN AIRPORT, CAIBARIEN, LAS VILLAS
PROVINCE, CUBA

Name and Location: Caibarien Airport is located 3 miles
SE of the city by the same name in
Las Villas Province.

Geographic Position: Latitude: 22° 30' N. Longitude: 79° 26' W.

Altitude: 10 feet.

Magnetic Variation: 2° E.

Landmarks: Paved road at SW end of field.

Dimensions: One runway: 3000' x 200' (50° - 230°)

Surface: Crushed rock; asphalt turn-around and
warm-up platform at SE end of runway.
Runway very soft after rain. CCA
lands C-47s regularly.

Markings: Outlined by white markers.

Lighting: None.

Obstructions: None.

Hangars: None.

Repair Facilities: None.

Fuel and Oil: 500 gallons 91 Octane normally available
in drums.

Communications: None.

Weather Service: None.

Transportation: Taxi.

Personnel Accommoda-
tions: Hotel in town, quality poor.

Prevailing Winds: 50° at 30 mph.

Precipitation: 50" per year.

Temperature: Mean average 80°.

Visibility:

RESTRICTED

Enclosure No. 6 to despatch
No. 2378 dated November 4,
1946, Embassy, Habana.

Visibility: Normally good. Very seldom fog.

Operated by: Owned by Caibarien Aero Club and leased
by PAA.

Customs: None.

Remarks: A contract has been let by PAA to put
macadam over the crushed rock on this
runway. Work has started to asphalt the
runway, and the first 200 feet of the SE
end of the field are completed. This
field is suitable for aircraft up to and
including the size of a C-47.

PHOTOGRAPH



Copy/dts

RESTRICTED

DATA ON JESUS MARIA FIELD, SANTIAGO DE CUBA,
ORIENTE PROVINCE, CUBA

Name and Location: Jesús Maria (Santiago de Cuba) Field,
1 mile N. of city.

Geographic Position: Latitude: 20° 02' N. Longitude: 75° 50' W.

Altitude: 20'

Magnetic Variation: 0° 29' E.

Landmarks: Mountains to NE and NW; radio mast
and buildings to S.

Dimensions: Runways: 3000' x 150' (160° - 340°)
4000' x 150' (90° - 270°)
(soft & not usable)

Surface: Field rocky. Runway rock covered
with gravel.

Markings: Red lights mark obstructions.

Lighting: Hand flares for emergency.

Obstructions: Mountains to N, E and W; radio antennae
at W of camp with posts 60 to 100 ft.
high.

Hangars: One: 116' x 136'

Repair Facilities: Shop and maintenance facilities.

Fuel and Oil: Limited supply of 91 octane gas and
120 motor oil.

Communications: Telephone and telegraph at field. Radio-
phone: Call CMH; 5600 kc and 3322.5 kc.
Aerophare: CMH; primary 339 kc, secondary
1678 kc.

Weather Service: Present spot reports only.

Transportation: Taxi.

Personnel Accommoda-
tions: Passenger station. Hotels in city,
quality poor.

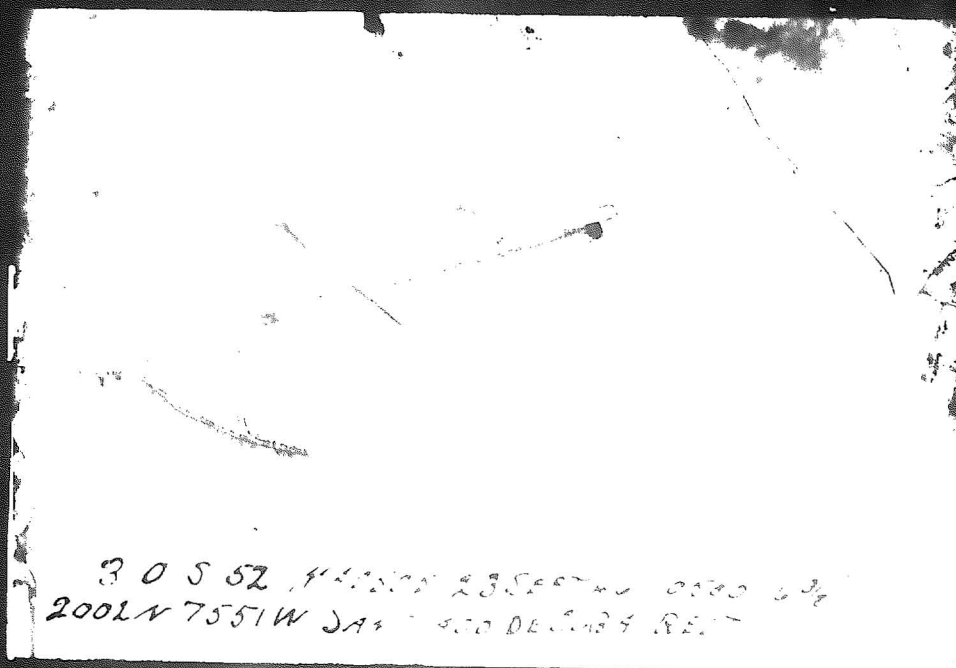
Prevailing Winds:

RESTRICTED

Enclosure No. 14 to despatch
No. 2378 dated November 4,
1946, Embassy, Habana.

Prevailing Winds: Summer: SE; winter: NE. Average 15 mph.
Precipitation: 3.5" per month.
Temperature: Average 75°.
Visibility: Generally good.
Operated by: Compañia Cubana de Aviación.
Customs: Yes.
Remarks: Used and operated by C.C.A. Use in
emergency only. Approaches very poor.

PHOTOGRAPH



Copy/dts

RESTRICTED

DATA ON RANCHO BOYEROS AIRPORT, RANCHO BOYEROS,
HABANA PROVINCE, CUBA

Name and Location: Rancho Boyeros Airport, 10 miles
S of Habana.

Geographic Position: Latitude: 23° 01' N. Longitude: 82° 24' W.

Altitude: 210'

Magnetic Variation: 3 1/2° E.

Landmarks: Town of Rancho Boyeros to NE.

Dimensions: Runways: 4200' x 200' (50° - 230°)
3100' x 100' (120° - 300°)
3000' x 200' (10° - 190°)

Surface: Runway 5-23 is macadam paved and will
support aircraft up to and including
B-17. The other 2 runways are of sod,
are rough and, when dry, will support
up to and including a C-47. Non-paved
runways are soft in wet weather.

Markings: All runways outlined and a white circle
marks the center of the field.

Lighting: All obstructions and all boundaries are
lighted, and there is permanent runway
lighting on paved runway. No flood
lights are available. Rotating light on
control tower. Night landings are
habitually made.

Obstructions: 40' trees at the take-off ends of run-
ways 5 and 12. Approaches to 5 and 12
are excellent.

Hangars: One hangar, approximately 120' x 120',
will accommodate up to medium bombers.

Repair Facilities: Repairs, including major overhaul.

Fuel and Oil: 91 and 100 octane gasoline. 120 aviation
oil.

Communications:

RESTRICTED

Enclosure No. 18 to despatch
No. 2378 dated November 4,
1946, Embassy, Habana.

Communications: Tower: Transmits 278 kc, guards 2870, 3105 and 4495 kc.
Aerophare: 348 kc primary, 1629 kc secondary.
Air-Ground: Call CMI; 5600 kc, 3322.5 kc, 5692.5 kc and 3082.5 kc.

Weather Service: Spot and route forecasts from PAA.

Transportation: Taxi, buses to city.

Personnel Accommodations: None at field, adequate in city of Habana.

Prevailing Winds: Summer E, SE; winter NE, E, ENE.
Maximum velocity 35 mph.

Precipitation: Annual average 50". Winter 3" per mo.; summer 7" per mo.

Temperature: Mean average 75° F.

Visibility: Usually good except in thunderstorms.

Operated by: Compañía Cubana de Aviación.

Customs: Airport of entry.

Remarks: This is the only airfield in vicinity of Habana which gives adequate airport facilities 24 hours a day.

Civil Operations: CCA, PAA, KLM, TACA, EAI, CCM, Cuban Navy.

Hospitals and First Aid: First aid only.

Railroads: Good siding facilities at airport.

Highways: Fair, 18-foot, all-weather pavement to Habana.

Waterways: Habana harbor, 10 miles distant.

Nearest Seaport: Habana harbor.

Electric Power: Obtained from sub-station located E of landing area, behind hangar. Source: Habana. 3200 volts and 4200 volts, reduced at airfield to 220 v. and 110 v.

Location of Facilities:

Enclosure No. 18 to despatch
No. 2378 dated November 4,
1946, Embassy, Habana.

Location of Facilities: One hangar.
Administration and office buildings.
Repair shops.
Water from aqueduct at Santiago
de las Vegas.
Radio antennae NE, 60' and 100'
high, painted orange and white.
Obstruction lights installed.

Garrisoning Facilities
and Possibilities: None.

Expansion Ability: Runways 5 and 12 can be extended
to 7000'.

Air Units: Cuban Naval Air Corps units, in-
cluding Grumman reconnaissance
planes and a few small patrol
bombers, all obsolete.

Defensive Installations: None.

Defensive Personnel: Small Cuban Navy aviation
detachment.

Copy/ats

RESTRICTED