



**National  
Foreign  
Assessment  
Center**

# **The Cuban Economy: A Statistical Review**

## **A Reference Aid**

*Information available as of December 1980  
has been used in the preparation of this report.*

Comments and queries on this paper are welcome  
and may be directed to:

**Director of Public Affairs  
Central Intelligence Agency  
Washington, D.C. 20505  
(703) 351-7676**

For information on obtaining additional copies, see  
the inside of front cover.

**ER 81-10052  
PA 81-10074  
March 1981**

This publication is prepared for the use of US Government officials, and the format, coverage, and content are designed to meet their specific requirements. US Government officials may obtain additional copies of this document directly or through liaison channels from the Central Intelligence Agency.

Requesters outside the US Government may obtain subscriptions to CIA publications similar to this one by addressing inquiries to:

**Document Expediting (DOCEX) Project  
Exchange and Gift Division  
Library of Congress  
Washington, D.C. 20540**

or: **National Technical Information Service  
5285 Port Royal Road  
Springfield, VA 22161**

Requesters outside the US Government not interested in subscription service may purchase specific publications either in paper copy or microform from:

**Photoduplication Service  
Library of Congress  
Washington, D.C. 20540**

or: **National Technical Information Service  
5285 Port Royal Road  
Springfield, VA 22161  
(To expedite service call the  
NTIS Order Desk (703) 487-4650)**

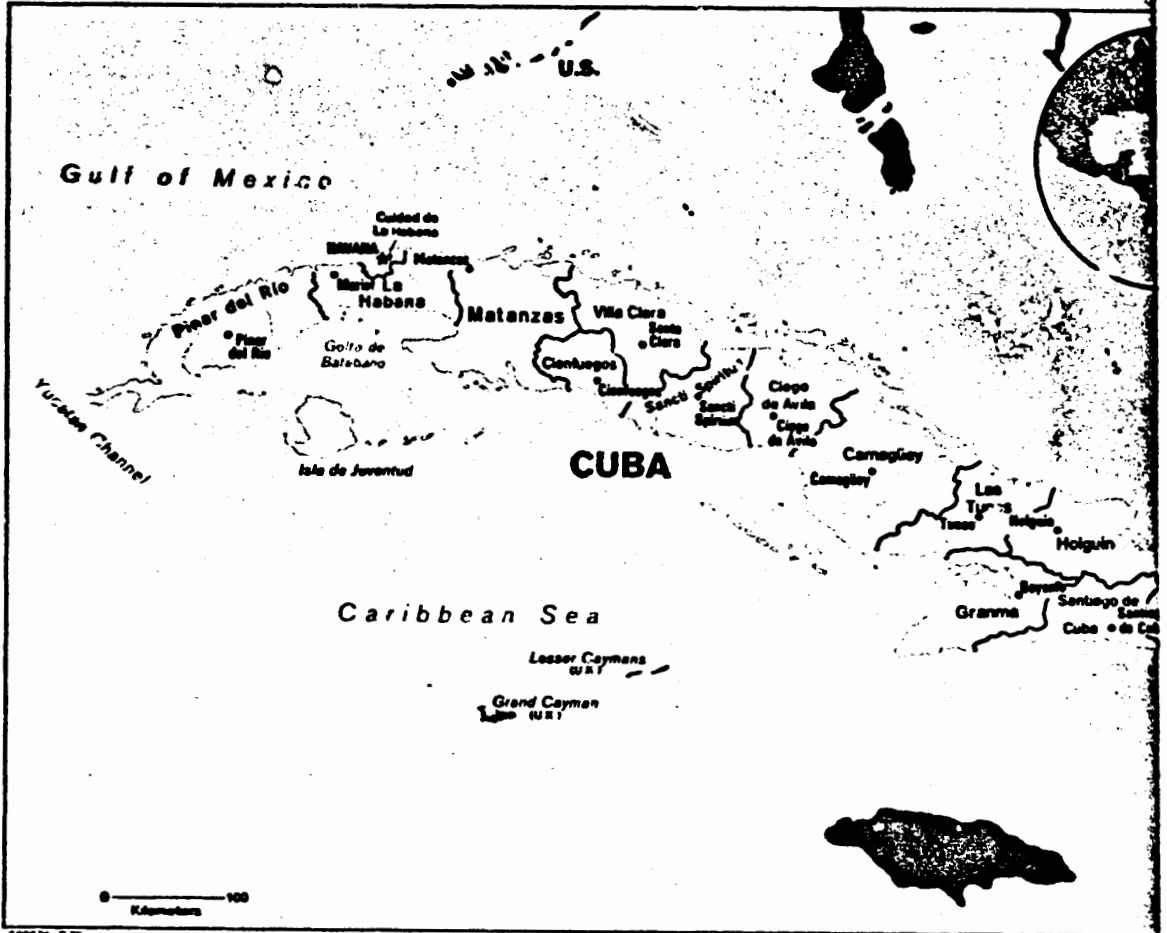
## **Overview**

This handbook on the Cuban economy provides a wide range of statistics of general interest: (a) agricultural and industrial output; (b) transportation; (c) distribution; (d) the value, direction, and composition of foreign trade; (e) Soviet economic assistance; (f) population and labor force; (g) social and economic comparisons with selected Third World countries; and (h) Cuba's diplomatic relations and membership in international organizations. The coverage focuses on the years 1970-78; where available, data for 1979 have also been included. In the foreign trade section, most data are through 1976 or 1977 because of lack of more recent data. Most tables also include comparative data for 1957—the peak prerevolution year—and 1965—an arbitrary benchmark for the first decade of the revolution.

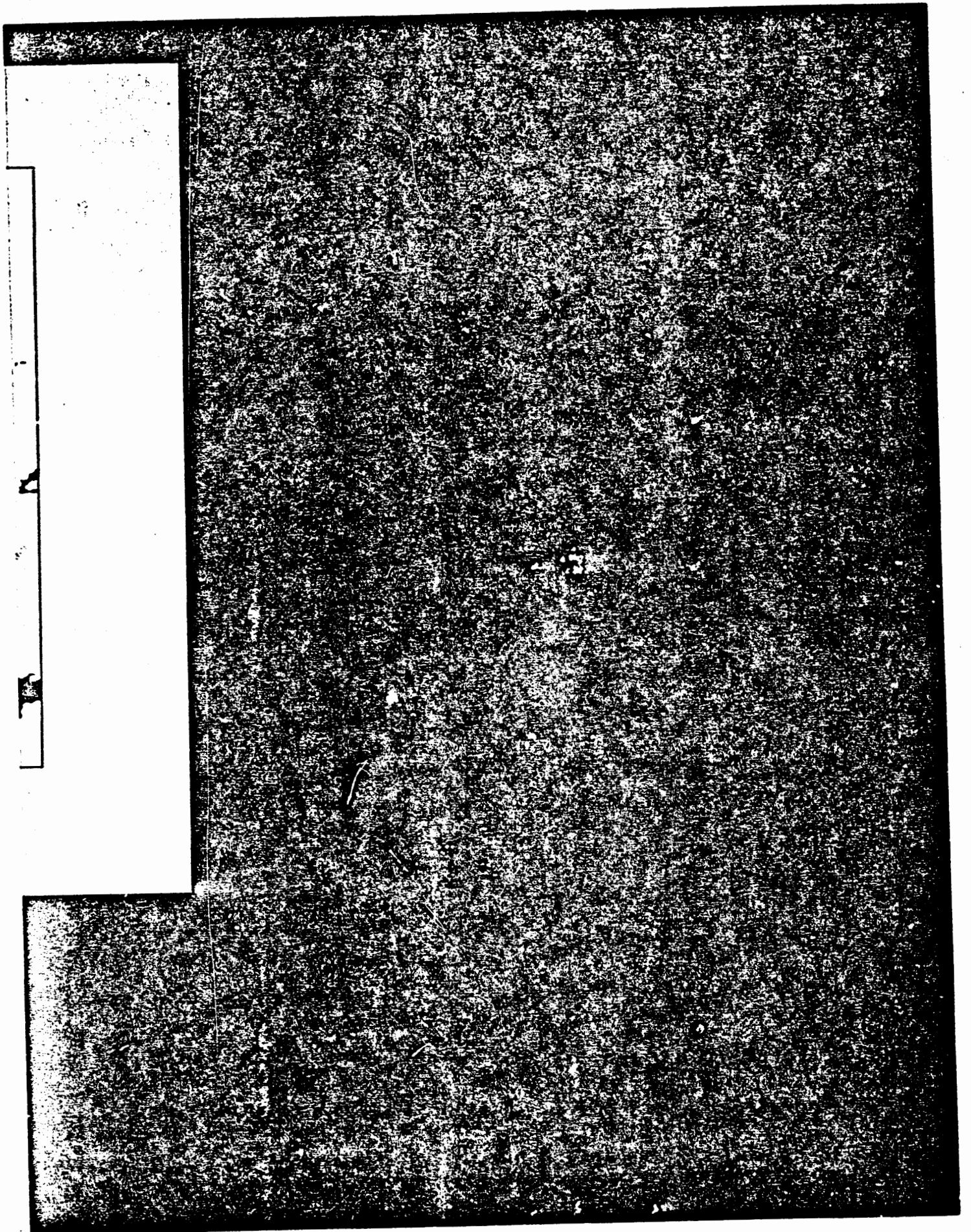
The statistics on Cuba were obtained mainly from official Cuban publications, supplemented with a small amount of data from a variety of non-Cuban sources. The statistics for other countries in the comparative sections were obtained from World Bank and IMF publications.

The statistics on foreign trade were converted from pesos to US dollars at official Cuban exchange rates. For the purpose of this report, Albania has been grouped with the East European Communist countries. Yugoslavia has been placed in the non-Communist category because its economic relations with Cuba are conducted in hard currency at world prices—the same as non-Communist countries.

The estimates of Soviet economic assistance are based on: (a) Soviet subsidies for Cuban sugar and nickel sales to Moscow and for Cuban petroleum purchases from the USSR, (b) estimated Cuban drawings of Soviet project aid, (c) inferred settlements to cover Cuba's trade deficits with the USSR, (d) estimated accrual of Cuban interest liabilities on outstanding debt to the USSR through 1972, and (e) estimates of other invisibles such as the wages of Soviet technicians in Cuba.



426636 2-62



## Contents

	<i>Page</i>
<b>Overview</b>	iii
<b>Country Brief</b>	1
<b>Domestic Economic Sector</b>	
<b>Sugar</b>	
1. Sugarcane Harvest: Area, Yields, and Mechanization	3
2. Sugar: Milling and Production	3
3. Sugar: Production, Exports, Consumption, and Stocks	4
<b>Nonsugar Agriculture</b>	
4. State Collection of Major Food Crops	5
5. Production of Industrial Crops	5
<b>Industry</b>	
6. Production of Major Industrial Products	7
7. Supply of Major Petroleum Products	9
8. Energy Consumption and Supply	9
9. Supply of Major Construction Materials	10
<b>Transportation</b>	
10. Freight Traffic by Type of Carrier	11
11. Passenger Traffic by Type of Carrier	11
<b>Distribution</b>	
12. Public Distribution of Major Food Groups	13
13. Per Capita Distribution of Major Food Groups	14
14. Distribution of Key Staples	15
15. Per Capita Distribution of Key Staples	16
16. Distribution of Consumer Items	17
17. Per Capita Distribution of Consumer Items	18
18. Per Capita Monthly Distribution of Foodstuffs	19
19. Distribution Through the Rationing System and Other Official Channels	20
<b>Finance</b>	
20. National Budget	21
<b>Foreign Economic Sector</b>	
<b>Foreign Trade</b>	
21. Foreign Trade by Major Area	23
22. Exports to Communist Countries	25

23. Exports to Non-Communist Countries	26
24. Imports From Communist Countries	27
25. Imports From Non-Communist Countries	28
26. Value of Exports by Major Commodity	29
27. Volume of Exports by Major Commodity	31
28. Value of Imports by Major Commodity	32
29. Volume of Imports by Major Commodity	33
30. Sugar Exports to Communist Countries	34
31. Sugar Exports to Non-Communist Countries	35
32. Sugar Export Prices in Principal Cuban Markets	36
<b>Balance of Payments</b>	
33. Hard Currency Balance of Payments	37
<b>Finance</b>	
34. Official Peso Exchange Rate	39
35. Soviet Economic Assistance	39
36. Foreign Trade Adjusted for Price Subsidies	40
<b>Population and Labor Force</b>	
37. Population	41
38. Civilian Employment by Economic Sector	41
<b>Socioeconomic Comparisons</b>	
<b>Social Indicators</b>	
39. Adult Literacy Rate	43
40. School Enrollment as a Share of Age Group, Primary (Aged 6 to 11 Years)	43
41. School Enrollment as a Share of Age Group, Secondary (Aged 12 to 19 Years)	43
42. School Enrollment as a Share of Age Group, Higher Education (Aged 20 to 24 Years)	43
43. Life Expectancy at Birth	44
44. Infant Mortality Rate (Age 10 to 1 Year)	44
45. Crude Birth Rate	44
46. Crude Death Rate	44
47. Population per Physician	45
48. Diet	45
49. Average Annual Population Growth Rate	46
50. Urban Population as a Share of Total Population	46

<b>Economic Indicators</b>	
51. GNP per Capita, 1978	47
52. Merchandise Trade Balance per Capita	47
53. Foreign Economic Dependency, 1978	47
54. Average Annual Real GDP Growth Rate, 1960-78	47
55. Average Annual Trade Growth Rates, 1959-78	48
56. Exports (f.o.b.) per Capita	48
57. Imports (c.i.f.) per Capita	48
58. Labor Force by Sector	49
59. Dependency Ratio and Unemployment	49
60. Estimated Income Distribution	50
61. Per Capita Electricity Production, 1978	52
62. Per Capita Grain Production, 1978	52
63. Agricultural Yields, 1978	52
<b>International Relations</b>	
64. Diplomatic Relations	53
65. Membership in International Organizations	54





## Country Brief, 1978

<b>Geography</b>	
Area	114,478 square kilometers
Capital	Havana
Provinces and capitals:	Camaguey (Camaguey) Ciego de Avila (Ciego de Avila) Cienfuegos (Cienfuegos) Ciudad de la Habana (Havana) Granma (Bayamo) Guantanamo (Guantanamo) Habana (Havana) Holguin (Holguin) Las Tunas (Victoria de las Tunas) Matanzas (Matanzas) Pinar del Rio (Pinar del Rio) Sancti Spiritus (Sancti Spiritus) Santiago de Cuba (Santiago de Cuba) Villa Clara (Santa Clara)
Major ports:	Havana, Santiago de Cuba, Matanzas, Nuevitas, Bahia de Nipe, Mariel
<b>People</b>	
Population	9,694,000 (midyear)
Language	Spanish
Literacy	About 96 percent
<b>Leadership</b>	
Fidel Castro Ruz	First Secretary of Cuban Communist Party, President of the Council of State and Ministers, and Commander in Chief of the Armed Forces
Raul Castro Ruz	Second Secretary of Cuban Communist Party, First Vice President of the Councils of State and Ministers, and Minister of Defense
<b>Economy</b>	
Estimated GNP	13.3 billion US \$
Agriculture	Main crops: sugar, tobacco, rice, vegetables, citrus fruits
Major industries	Sugar milling, electricity, petroleum refining, nickel mining, food processing, cement
Exports	\$4.5 billion f.o.b. sugar, nickel, tobacco, shellfish
Imports	\$4.7 billion c.i.f. capital equipment, industrial raw materials, foodstuffs, petroleum
Major trade partners	Exports: USSR, Eastern Europe, Canada, China, Japan, Spain Imports: USSR, Eastern Europe, China, Argentina, Japan, Spain
Official monetary conversion rate:	1 peso equals US \$1.33

Domestic Economic  
Sector



**Table 1**

**Sugarcane Harvest: Area, Yields, and Mechanization <sup>a</sup>**

	1957	1965	1970	1971	1972	1973	1974	1975	1976	1977	1978	1979
Area available for harvest (thousand hectares) <sup>b</sup>	1,414	NA	1,504	1,436	1,389	1,421	1,450	1,507	1,533	1,630	1,640	1,685
Area harvested (thousand hectares)	1,265	1,054	1,460	1,251	1,181	1,073	1,103	1,180	1,224	1,137	1,237	1,304
Volume harvested (thousand metric tons)	44,700	51,840	81,515	52,190	44,303	48,230	50,373	52,380	53,784	60,353	69,653	73,050
Yield (metric ton per hectare harvested)	35	49	56	42	38	45	46	44	44	53	56	56
Share mechanically harvested (percent of total volume)	NDGL	NA	NA	1.0	7.0	11.2	19.2	25.8	33.0	35.0 <sup>c</sup>	39.0	45.0 <sup>c</sup>

<sup>a</sup> Unless otherwise stated, data are for the crop year ending 31

October of the given year.

<sup>b</sup> Year-end data.

<sup>c</sup> Estimated.

Sources: *Anuario Estadístico de Cuba* (1972, 1976, 1978), *Guía Estadística* (1979), *Anuario Azucarero* (1959), *Cuba en Cifras* (1979).

**Table 2**

Thousand Metric Tons  
Except as Noted

**Sugar: Milling and Production <sup>a</sup>**

	1957	1965	1970	1971	1972	1973	1974	1975	1976	1977	1978	1979
Total sugar production (raw value)	5,742	6,156	8,538	5,925	4,325	5,253	5,925	6,314	6,156	6,485	7,350	7,992
Raw sugar	5,058	5,067	7,448	5,329	3,596	4,479	5,114	5,577	5,395	5,678	6,414	7,015
Refined sugar <sup>b</sup>	629	1,022	1,003	548	671	712	746	678	700	742	861	899
Molasses production <sup>c</sup>	1,405	2,144	2,990	2,143	1,676	1,712	1,849	1,871	1,809	2,017	2,191	2,487
Milled cane	44,700	50,687	79,800	51,548	43,544	47,457	49,562	50,349	51,999	56,149	67,043	73,100
Sugar content of milled cane (percent)	12.8	12.1	10.7	11.5	9.9	11.1	11.9	12.4	11.8	11.5	10.9	10.9

<sup>a</sup> Crop year ending 31 October of the given year.

<sup>b</sup> The conversion rate of refined sugar to raw value is 1.087.

<sup>c</sup> Calendar year.

Sources: *Anuario Estadístico de Cuba* (1972, 1976, 1978), *Boletín Estadístico* (1970), *Anuario Azucarero* (1959), *Cuba en Cifras* (1979).

**Table 3**

Thousand Metric Tons

**Sugar: Production, Exports, Consumption, and Stocks \***

	1957	1965	1970	1971	1972	1973	1974	1975	1976	1977	1978	1979
<b>Production</b>	5,672	6,082	7,559	5,950	4,688	5,383	5,926	6,427	6,151	6,953	7,662	7,800
<b>Exports</b>	5,307	5,316	6,909	5,511	4,140	4,797	5,491	5,744	5,764	6,238	7,231	7,269
<b>Consumption</b>	304	492	619	616	471	464	522	499	532	519	552	519
<b>Stocks, at yearend</b>	681	472	439	262	339	461	374	558	413	609	488	500

\* Calendar year at raw value.

Source: International Sugar Organization's *Statistical Bulletin* (1965, 1973, 1976, and 1980) and *ISO Yearbook* (1960).

Non-Sugar  
Agriculture

Table 4

Thousand Metric Tons  
Except as Noted

## State Collection of Major Food Crops

	1957 <sup>a</sup>	1965	1970	1971	1972	1973	1974	1975	1976	1977	1978	1979
<b>Major Crops</b>												
Rice (milled)	260	50	291	286	239	237	309	338	335	334	344	390
Beans	36	11	5	5	6	3	3	5	3	2	2	2
Potatoes	94	84	77	75	76	56	88	117	145	137	174	172
Sweet potatoes and name	184	89	24	41	68	90	88	97	88	70	61	79
Yuoca	186	62	22	27	65	73	68	83	84	83	86	72
Malanga	41	47	12	14	26	20	26	33	45	59	117	NA
Tomatoes	44	120	62	85	57	101	184	184	194	146	132	143
Pineapples	102	16	14	21	32	31	30	22	21	17	18	14
Citrus fruits	150	116	164	124	162	177	176	182	199	178	198	186
Plantains and bananas	360	104	88	102	193	188	188	205	238	215	241	222
<b>Livestock</b>												
Milk	NA	231	214	228	344	379	421	454	528	562	596	611
Beef and veal <sup>b</sup>	1 <sup>a</sup>	151	341	325	315	270	228	219	262	269	280	NA
Eggs (million dozen)	2 <sup>a</sup>	77	117	126	128	132	140	146	142	154	141	153
Pork	42	18	12	16	17	21	30	38	46	52	56	56
Poultry <sup>b</sup>	47	34	21	24	30	36	45	56	62	NA	57	64

<sup>a</sup> Production only.<sup>b</sup> Live weight.

Sources: *Anuario Estadístico de Cuba* (1972, 1976, 1978), *Boletín Estadístico* (1970), *Cuba en Cifras* (1979), "Availability and Reliability of Statistics in Socialist Cuba" by Carmelo Mesa-Lago in *Latin American Research Review* (January 1970).

Table 5

Thousand Metric Tons

## Production of Industrial Crops

	1957	1965	1970	1971	1972	1973	1974	1975	1976	1977	1978	1979
<b>Export crops</b>												
Tobacco	42	43	32	25	40	44	45	41	51	46	40	33
Coffee	44	24	20	26	25	21	29	18	19	16	13	NA
Seafood	21	40	106	126	140	150	165	143	194	185	213	148
Of which:												
Fish	14	26	84	95	105	115	123	117	146 <sup>a</sup>	139 <sup>a</sup>	160 <sup>a</sup>	111 <sup>a</sup>
Crustacea and mollusks	7	14	19	20	22	21	22	24	30	27	32	NA

<sup>a</sup> Estimated.

Sources: *Anuario Estadístico de Cuba* (1972, 1976, 1978), *Mar y Pesca*, "Availability and Reliability of Statistics in Socialist Cuba" by Carmelo Mesa-Lago in *Latin American Research Review* (January 1970).



**Table 6**

**Production of Major Industrial Products**

	1957	1965	1970	1971	1972	1973	1974	1975	1976	1977	1978	1979
<b>Food processing (thousand metric tons)</b>												
Wheat flour	64.0	137.3	159.7	175.3	177.6	178.4	184.3	176.1	165.6	176.4	174.9	169.5
Refined vegetable oil	2.7	41.3	40.4	56.4	60.2	51.5	56.7	59.1	46.3	59.7	52.7	NA
Roasted coffee	32.2	26.7	27.1	27.1	26.8	27.2	27.7	28.4	23.7	15.5	16.0	NA
Condensed and evaporated milk	39.5	56.6	68.1	77.9	49.4	58.5	57.3	62.1	62.0	63.2	62.9	NA
<b>Tobacco and beverages</b>												
Cigars (million units)	409.0	656.8	363.5	277.2	327.0	353.0	374.5	383.3	360.9	352.6	354.2	293.9
Cigarettes (billion units)	9.8	16.5	19.8	10.2	11.2	15.0	14.5	15.4	14.7	15.9	16.9	17.4
Beer and malt (million hectoliters)	1.3	1.2	1.5	1.9	2.3	2.3	2.3	2.5	2.6	2.5	2.5	2.5
<b>Textiles and footwear</b>												
Cotton textiles (million square meters)	48.4	96.1	75.7	87.0	98.0	117.1	127.9	138.0	134.1	148.9	154.4	148.5
Rayon textiles (million square meters)	7.1	21.3	2.2	8.1	7.4	6.8	3.8	6.3	5.1	2.6	1.5	NA
Leather footwear (million pair)	20.0*	11.0	12.1	14.2	14.4	14.8	13.5	15.5	15.0	12.5	14.7	13.9
Rubber footwear (thousand pair)	3.1	4.5	6.1	11.2	11.8	8.9	6.3	7.1	6.6	2.4	NA	NA
<b>Chemicals</b>												
Soap (thousand metric tons)	34.0	49.4	48.8	57.2	50.5	54.5	56.9	58.4	60.6	51.0	56.0	NA
Detergents (thousand metric tons)	12.6	12.6	12.2	18.1	16.7	17.9	15.7	22.0	21.9	16.8	21.3	15.3
Rubber tires (1,000 units)	156.0	197.0	201.9	251.2	381.1	371.5	390.8	367.8	266.4	171.9	294.5	NA
Super phosphate (thousand metric tons)	37.2	47.9	NA	9.3	38.5	45.0	15.6	43.3	5.1	9.8	32.4	NA
Caustic soda (thousand metric tons)	2.0	3.1	3.6	3.9	4.3	3.6	4.0	4.0	4.0	4.7	4.9	NA
Sulfuric acid (thousand metric tons)	34.4	201.5	321.9	368.3	399.7	384.6	383.8	418.0	391.8	374.8	346.5	295.7

Industry

**Table 6**

**Production of Major Industrial Products (continued)**

	1957	1965	1970	1971	1972	1973	1974	1975	1976	1977	1978	1979
<b>Metalurgy</b> (thousand metric tons)												
Nickel oxide and sinter	20.2	18.3	18.3	18.0	17.5	17.0	15.0	18.5	18.4	18.6	18.3	} 32.5
Nickel slurry	0	9.9	18.3	18.5	19.2	18.2	18.9	18.8	18.6	18.1	16.5	
Crude steel	14.0	36.0	140.0	110.8	186.6	220.7	250.3	298.4	250.2	330.5	336.3	327.8
Copper concentrate	20.2	6.0	0.4	0	1.8	2.1	2.9	2.8	2.9	2.6	2.8	2.8
Refractory chrome	40.4	41.0	22.8	13.9	37.1	37.2	37.7	36.1	19.1	20.3	28.8	NA
<b>Petroleum</b> (thousand metric tons)												
Gasoline	387.1	809.7	744.9	712.1	602.7	911.0	868.1	947.1	909.4	833.3	886.7	872.0
Fuel oil	716.4	1,891.6	2,367.3	2,375.8	2,525.9	2,672.9	2,679.1	2,822.1	2,935.6	3,209.5	3,100.6	3,213.2
Gas oil (diesel)	439.2	528.2	582.3	655.8	712.9	865.1	974.9	1,083.3	961.8	995.7	1,083.0	1,094.3
Crude oil	52.0	57.0	159.1	120.1	112.2	137.8	168.0	226.4	234.4	255.4	288.4	289.6
<b>Electricity</b> (million kilowatt-hours)												
Public utility	1,645.0	2,592.5	3,609.4	3,789.3	4,211.6	4,582.8	4,892.0	5,412.9	6,018.2	6,514.3	7,174.2	} 9,391.0
Industrial utility	750.0	975.0	1,278.2	1,231.7	1,053.4	1,020.6	1,126.0	1,170.0	1,173.2	1,192.6	1,307.1	
Paper and cardboard (thousand metric tons)	55.0 <sup>a</sup>	59.1	62.3	83.7	75.6	91.3	87.6	84.5	76.7	70.4	77.2	NA
<b>Construction materials</b>												
Cement (thousand metric tons)	650.8	801.1	742.0	1,088.1	1,473.7	1,757.4	1,813.5	2,083.1	2,501.1	2,656.3	2,711.7	2,600.0
Lumber (thousand cubic meters)	68.0	73.6	28.4	37.1	38.2	52.7	50.7	55.5	41.4	68.0	78.1	NA

<sup>a</sup> Data for 1958.

<sup>b</sup> Estimated.

Sources: Anuario Estadístico de Cuba (1972, 1976, 1978), Boletín Estadístico (1970), Cuba en Cifras (1979), "Availability and Reliability of Statistics in Socialist Cuba" by Carmelo Mesa-Lago in Latin America Research Review (January 1970).

Table 7

Thousand Metric Tons

## Supply of Major Petroleum Products \*

	1957	1965	1970	1971	1972	1973	1974	1975	1976
Fuel oil	1,516	2,690	3,515	3,785	3,841	3,976	3,931	4,150	4,423
Gas oil (diesel)	439 <sup>b</sup>	709	1,065	1,144	1,258	1,354	1,467	1,564	1,764
Gasoline	642	938	791	798	816	960	917	991	979
Kerosene	NA	202	401	439	441	452	424	447	453

\* Imports plus domestic production.

<sup>b</sup> Production only.

Sources: *Anuario Estadístico de Cuba* (1972, 1976, 1978), *Boletín Estadístico* (1970) *Comercio Exterior* (1958), *Vneshnyaya Torgovlya USSR* (1978).

Table 8

Barrel Per Day  
Oil Equivalent

## Energy Consumption and Supply

	1958	1965	1975	1978 <sup>a</sup>	1979 <sup>a</sup>
Energy consumption	127,077	148,747	215,757	261,850	276,572
Oil	81,873	93,463	160,815	196,134	206,175
Nonoil <sup>b</sup>	45,204	55,284	54,942	65,716	70,397
Domestic production	43,900	53,859	57,794	69,102	73,783
Oil	501	1,145	4,537	5,020	5,020
Hydroelectricity	342	964	1,044	1,204	1,204
Natural gas	0	0	282	333	333
Ethyl alcohol	1,205	1,484	704	704	704
Bagasse	40,868	45,526	45,526	56,098	60,779
Fuelwood/charcoal	984	4,740	5,701	5,743	5,743
Net energy imports	83,177	94,888	157,963	192,748	202,789
Oil	42,010	69,945	116,416	130,534	130,534
Oil products	39,362	22,373	39,580	60,247	70,288
Coal	1,805	2,570	1,967	1,967	1,967

<sup>a</sup> Estimated.<sup>b</sup> Includes natural gas.

Sources: Computations based on *Anuario Estadístico de Cuba* (1972, 1976, 1978) and *A Study on Cuba* (Cuban Economic Research Project).

**Table 9****Supply of Major Construction Materials<sup>a</sup>**

	1957	1965	1970	1971	1972	1973	1974	1975	1976	1977	1978
Cement (thousand metric tons)	815	852	867	1,240	1,530	1,804	1,887	2,164	2,646	2,778	2,817
Corrugated steel bars (thousand metric tons)	80 <sup>b</sup>	39	85	95	145	189	205	243	255	292 <sup>b</sup>	293 <sup>b</sup>
Iron and steel tubing (thousand metric tons)	26	38	45	46	59	103	85	122	108	21 <sup>c</sup>	20 <sup>c</sup>
Lumber (thousand cubic meters)	250	292	321	403	391	377	528	637	416	473	548
Sand (thousand cubic meters)	NA	780	1,201	1,816	2,596	2,875	3,341	4,204	4,323	4,233	4,690
Stone (thousand cubic meters)	NA	2,027	2,913	4,813	6,107	7,435	7,599	8,919	9,512	9,682	10,143
Bricks (million units)	NA	64	31	46	71	65	67	77	100	113	114
Ceramic bathroom fixtures (thousand units)	NA	93	55	100	133	135	157	160	171	214	245

<sup>a</sup> Domestic production plus imports.

<sup>b</sup> Estimated.

<sup>c</sup> Production only.

Sources: *Anuario Estadístico de Cuba* (1972, 1976, 1978), *Boletín Estadístico* (1970), *Comercio Exterior* (1958), *Vneshnyaya Torgovlya USSR* (1978).

Transportation

Table 10

Thousand Metric Tons

## Freight Traffic by Type of Carrier

	1957	1965	1970	1971	1972	1973	1974	1975	1976	1977	1978	1979
Total	NA	15,288	47,890	47,860	51,895	56,372	60,762	67,796	75,706	79,162	85,758	87,373
Air	NA	6	9	9	7	7	7	7	7	6	6	6
National	NA	5	8	8	6	5	5	5	4	4	4	3
International	NA	1	1	1	1	2	2	2	3	2	2	3
Maritime*	NA	926	2,140	6,812	6,655	7,015	8,466	9,399	8,107	8,462	8,711	9,542
Coastal	NA	373	934	3,269	3,619	3,949	4,254	4,829	4,409	4,450	4,747	5,042
Intercoastal	NA	553	1,206	3,543	3,036	3,066	4,212	4,670	3,698	4,012	3,964	4,499
Motor vehicle <sup>b</sup>	NA	4,244	33,206	30,384	35,664	39,333	41,422	47,422	56,272	57,094	63,511	64,283
Railroad	9,600	10,032	11,735	10,655	9,569	10,017	10,867	10,867	11,320	13,601	13,530	13,542

\* Includes rented and leased vessels as of 1970.

<sup>b</sup> Includes rented and leased vehicles as of 1970 and private vehicles used for cargo transport as of 1972.

Sources: Anuario Estadístico de Cuba (1972, 1976, 1978), Cuba en Cifras (1979).

Table 11

Million Passengers

## Passenger Traffic by Type of Carrier

	1957	1965	1970	1971	1972	1973	1974	1975	1976	1977	1978	1979
Total	NA	1,183	1,643	1,567	1,862	1,974	2,039	2,269	2,411	2,305	2,334	2,332
Air	NA	0.450	0.877	0.895	0.934	0.814	0.703	0.718	0.731	0.654	0.725	0.900
National	NA	0.406	0.846	0.855	0.895	0.771	0.649	0.654	0.646	0.546	0.613	NA
International	NA	0.025	0.031	0.040	0.039	0.043	0.054	0.064	0.085	0.108	0.112	NA
Maritime*	NA	0.181	0.365	0.378	0.432	0.397	0.480	0.663	0.796	0.807	0.709	0.700
Motor vehicle	NA	1,160	1,617	1,711	1,437	1,948	2,016	2,234	2,376	2,266	2,294	2,293
Urban bus	NA	936	1,261	1,303	1,442	1,523	1,549	1,702	1,797	1,649	1,662	1,630
Interurban bus	NA	224	381	310	317	339	372	419	431	420	448	488
Taxicab	NA	0	75	68	78	86	89	113	148	197	184	175
Railroad	7	2	13	12	10	10	10	11	13	15	18	18
Trolley	NA	1	12	12	14	15	18	22	21	22	21	20

\* Rented and leased vessels only.

Sources: Anuario Estadístico de Cuba (1972, 1976, 1978) Cuba en Cifras (1979).

Distribution



Table 12

Thousand Metric Tons

## Public Distribution of Major Food Groups \*

	Grains and Cereals <sup>b</sup>	Seafood	Dairy Products <sup>c</sup>	Fruits and Vegetables <sup>d</sup>	Meat <sup>e</sup>
1965	NA	49.0	290.3	795.7	NA
1966	633.3	49.8	390.1	983.2	NA
1967	699.9	61.1	432.5	854.1	NA
1968	719.4	57.5	444.5	814.7	NA
1969	780.1	62.2	527.4	677.5	NA
1970	859.0	84.7	562.5	571.0	NA
1971	892.1	83.6	599.1	615.6	119.8
1972	899.7	91.2	625.4	723.9	123.7
1973	861.5	96.9	672.3	778.0	114.2
1974	941.6	95.4	701.3	902.0	121.9
1975	954.4	98.2	737.3	977.8	136.3
1976	962.3	101.2	758.5	1,060.0	142.4
1977	820.7	91.6	740.0	982.8	156.2
1978 <sup>f</sup>	921.7	102.3	835.7	1,074.5	168.8

\*Total distribution to the public through official channels.

<sup>b</sup>Includes rice, bread, corn, wheat flour, pasta, and cereal.<sup>c</sup>Includes condensed, pasteurized, crude, evaporated, powdered, and dietic milk, yogurt, and cheese.<sup>d</sup>Includes citrus, plantains, bananas, jam, preserved fruits and vegetables, potatoes, malanga, sweet potatoes, name, yuca, tomatoes, onions, garlic, and beans.<sup>e</sup>Includes red meat, chicken, and pork.<sup>f</sup>Preliminary.

Sources: Anuario Estadístico de Cuba (1972, 1976, 1978), Boletín Estadístico (1970).

**Table 13****Per Capita Distribution of Major Food Groups \***

	Grains and Cereals (1966 = 100)	Seafood (1965 = 100)	Dairy Products (1965 = 100)	Fruits and Vegetables (1965 = 100)	Meat (1971 = 100)
1965	NA	100.0	100.0	100.0	NA
1966	100.0	99.4	131.5	120.9	NA
1967	106.9	119.6	143.0	103.0	NA
1968	109.5	110.6	144.3	96.5	NA
1969	116.8	117.7	168.5	79.0	NA
1970	126.7	157.9	177.0	65.5	NA
1971	129.4	153.3	185.5	69.5	100.0
1972	128.0	164.1	189.9	80.2	101.3
1973	120.2	171.0	200.2	84.5	91.7
1974	129.1	165.4	205.2	96.3	96.2
1975	128.9	167.6	212.5	102.8	105.9
1976	128.1	170.3	215.4	109.8	109.1
1977	107.9	152.2	207.5	100.6	118.1
1978 *	119.9	168.2	231.9	108.8	126.4

\* Distributed through official channels.

\* Preliminary.

Sources: *Anuario Estadístico de Cuba* (1972, 1976, 1978), *Boletín Estadístico* (1970).

Table 14

Thousand Metric Tons

## Distribution of Key Staples \*

	Rice	Beans	Cooking Oil and Lard	Coffee	Sugar	Bread	Beef	Chicken
1965	326.3	77.4	82.7	26.7	369.1	NA	NA	30.8
1966	208.3	79.0	90.3	22.4	421.3	363.5	NA	21.8
1967	215.9	88.7	92.8	23.6	487.2	385.8	NA	19.6
1968	203.0	80.1	98.3	24.3	547.7	368.8	NA	20.2
1969	274.2	83.7	97.8	25.8	372.5	376.5	NA	15.6
1970	356.5	80.5	101.1	27.1	397.9	387.2	NA	15.6
1971	391.3	88.9	110.5	27.1	407.2	388.5	96.7	17.9
1972	386.9	88.5	107.4	26.8	331.4	398.0	93.3	22.7
1973	383.1	89.6	107.3	27.1	299.2	362.7	78.8	26.5
1974	401.6	94.1	114.1	27.8	335.3	438.1	63.7	42.9
1975	416.7	95.8	120.1	28.4	287.3	411.2	60.1	67.4
1976	388.0	105.2	123.5	25.6	342.0	484.9	72.5	61.8
1977	361.7	98.2	118.2	15.8	352.8	297.4	80.4	56.9
1978 <sup>b</sup>	384.3	103.3	129.8	17.4	358.2	381.4	80.0	67.8

\* Total distribution to the public through official channels.

<sup>b</sup> Preliminary.

Sources: Anuario Estadístico de Cuba (1972, 1976, 1978), Boletín Estadístico (1970).

**Table 15****Per Capita Distribution of Key Staples \***

	Rice (1965 = 100)	Beans (1965 = 100)	Cooking Oil and Lard (1965 = 100)	Coffee (1965 = 100)	Jugar (1965 = 100)	Bread (1966 = 100)	Beef (1971 = 100)	Chicken (1965 = 100)
1965	100.0	100.0	100.0	100.0	100.0	NA	NA	100.0
1966	62.5	99.9	106.8	82.1	111.7	100.0	NA	69.2
1967	63.5	107.7	107.7	84.8	113.3	117.6	NA	61.1
1968	58.6	97.6	112.1	85.8	139.9	132.3	NA	61.8
1969	77.9	100.3	109.7	89.6	93.6	137.7	NA	47.0
1970	99.8	95.0	111.6	92.7	98.5	137.2	NA	46.3
1971	107.8	103.2	120.1	91.2	99.2	135.5	100.0	52.2
1972	104.5	100.8	114.5	88.5	79.2	134.4	94.6	65.0
1973	101.5	100.1	112.2	87.8	70.1	121.6	78.4	74.4
1974	104.6	103.3	117.2	88.5	77.2	138.5	62.3	118.3
1975	106.8	103.5	121.5	89.0	65.1	133.5	57.9	183.1
1976	98.1	112.1	123.1	79.1	76.4	132.8	68.9	165.5
1977	90.2	103.3	116.4	48.2	77.8	93.9	75.3	150.4
1978 *	94.9	107.5	126.4	52.5	78.2	119.2	74.2	177.4

\* Distributed through official channels.

• Preliminary.

Sources: *Anuario Estadístico de Cuba* (1972, 1976, 1978), *Boletín Estadístico* (1970).

**Table 16****Distribution of Consumer Items \***

	Cigars (Million Units)	Cigarettes (Billion Units)	Clothing (Million Units)	Leather Shoes (Thousand Pairs)	Refrigerators (Thousand Units)	TVs, Radios, and Record Players (Thousand Units)
1965	578.5	28.6	86.3	9.7	NA	NA
1966	627.5	30.2	71.2	12.3	NA	NA
1967	731.7	31.9	75.7	12.5	NA	NA
1968	656.8	34.8	64.7	12.7	NA	NA
1969	359.7	39.3	52.8	10.2	NA	NA
1970	318.8	33.5	58.0	11.4	NA	NA
1971	233.9	17.9	65.0	13.0	24.8	164.3
1972	206.3	17.3	79.0	13.4	27.8	252.1
1973	262.0	24.4	96.0	13.5	39.8	342.7
1974	260.9	22.9	88.7	13.0	40.8	267.3
1975	259.2	23.1	101.0	15.0	45.8	379.4
1976	249.6	23.7	86.8	14.2	86.7	464.5
1977	240.9	23.1	83.0	13.4	83.8	519.6
1978 <sup>b</sup>	253.0	25.7	83.7	14.8	104.5	398.7

\* Total distribution to the public through official channels.

<sup>b</sup> Preliminary.

Source: *Anuario Estadístico de Cuba* (1972, 1976, 1978).

**Table 17****Per Capita Distribution of Consumer Items \***

	<b>Cigars (1965 = 100)</b>	<b>Cigarettes (1965 = 100)</b>	<b>Clothing (1965 = 100)</b>	<b>Leather Shoes (1965 = 100)</b>	<b>Refrigerators (1971 = 100)</b>	<b>TVs, Radios, and Record Players (1971 = 100)</b>
1965	100.0	100.0	100.0	100.0	NA	NA
1966	106.1	103.3	80.7	124.1	NA	NA
1967	121.4	107.0	84.2	123.7	NA	NA
1968	107.0	114.7	70.1	123.4	NA	NA
1969	57.7	127.4	56.7	97.5	NA	NA
1970	50.3	107.0	61.4	107.3	NA	NA
1971	36.4	56.2	67.7	120.5	100.0	100.0
1972	31.5	53.3	80.7	121.8	113.4	150.5
1973	39.2	73.7	96.2	120.3	156.3	200.6
1974	38.3	68.0	87.3	113.9	160.7	153.8
1975	37.5	67.6	97.9	129.4	174.5	214.9
1976	35.6	68.3	82.9	120.7	329.3	259.6
1977	33.9	65.7	78.3	112.4	316.3	286.4
1978 *	35.2	72.4	78.2	123.1	390.5	217.6

\* Distributed through official channels.

• Preliminary.

Sources: *Anuario Estadístico de Cuba* (1972, 1976, 1978), *Boletín Estadístico* (1970).

Table 18

Kilograms

Per Capita Monthly Distribution of Foodstuffs <sup>a</sup>

	1965	1970	1971	1972	1973	1974	1975	1976	1977	1978 <sup>b</sup>
Beans	0.82	0.77	0.86	0.82	0.82	0.86	0.82	0.91	0.82	0.86
Rice	3.45	3.45	3.76	3.63	3.54	3.63	3.72	3.40	3.13	3.31
Beef	NA	NA	0.91	0.86	0.73	0.59	0.54	0.64	0.68	0.68
Other meat	NA	NA	0.82	0.95	0.91	1.22	1.36	1.32	1.32	1.41
Sugar	3.95	3.86	3.90	3.13	2.77	3.04	2.59	2.99	3.08	3.08
Cooking oil and lard	0.91	1.00	1.04	1.00	1.00	1.04	1.09	1.09	1.04	1.09
Coffee	0.27	0.27	0.27	0.23	0.23	0.23	0.23	0.23	0.14	0.14
Fruits	2.81	2.36	2.77	3.81	4.04	4.08	4.17	4.63	4.14	4.13
Vegetables	NA	NA	2.09	1.68	2.45	3.27	3.54	3.31	2.59	2.54
Root crops	3.04	1.54	1.68	2.18	2.18	2.45	2.72	2.95	2.95	3.67
Fish	0.50	0.82	0.82	0.86	0.91	0.86	0.86	0.91	0.77	0.86
Eggs (units)	9.4	13.3	13.7	13.9	14.3	14.8	15.5	14.6	14.3	14.8
Bread	NA	3.76	3.72	3.67	3.36	3.81	3.67	3.63	2.59	3.31

<sup>a</sup> Distributed through official channels. Actual consumption is higher because of food acquired through the black market.

<sup>b</sup> Preliminary.

Source: *Anuario Estadístico de Cuba* (1972, 1976, 1978).

Table 19

Percent

## Distribution Through the Rationing System and Other Official Channels \*

	1971	1972	1973	1974	1975	1976	1977	1978 <sup>b</sup>
<b>Beans</b>								
Rationing system	71.1	72.0	69.4	67.1	65.3	63.7	65.5	65.5
Other	28.9	28.0	30.6	32.9	34.7	36.3	34.5	34.5
<b>Rice</b>								
Rationing system	76.9	76.9	74.9	78.1	77.2	73.4	70.9	70.9
Other	23.1	23.1	25.1	21.9	22.8	26.6	29.1	29.1
<b>Sugar</b>								
Rationing system	79.0	74.8	69.7	73.5	67.3	73.0	73.1	71.4
Other	21.0	25.2	30.3	26.5	32.7	27.0	26.9	28.6
<b>Cooking oil and lard</b>								
Rationing system	69.1	67.2	66.9	67.4	67.4	66.6	66.8	64.8
Other	30.9	32.8	33.1	32.6	32.6	33.4	33.2	35.2
<b>Beef</b>								
Rationing system	92.3	95.2	93.4	92.6	89.8	90.1	85.4	86.2
Other	7.7	4.8	6.6	7.4	10.2	9.9	14.6	13.8
<b>Eggs</b>								
Rationing system	70.5	67.7	68.1	64.6	63.3	62.7	68.0	64.2
Other	29.5	32.3	31.9	35.4	36.7	37.3	32.0	35.8
<b>Fruits</b>								
Rationing system	46.4	57.6	51.8	53.4	53.9	54.7	54.6	53.4
Other	53.6	42.4	48.2	46.6	46.1	45.3	45.4	46.6
<b>Vegetables</b>								
Rationing system	56.6	57.1	57.2	53.4	51.2	45.5	46.5	43.1
Other	43.4	42.9	42.8	46.6	48.8	54.5	53.5	56.9
<b>Root crops</b>								
Rationing system	72.6	80.2	79.1	78.0	76.7	76.0	72.0	70.5
Other	27.4	19.8	20.9	22.0	23.3	24.0	28.0	29.7
<b>Dairy products<sup>c</sup></b>								
Rationing system	87.6	87.3	84.9	83.2	80.5	79.6	76.8	75.5
Other	12.4	12.7	15.1	16.8	19.5	20.4	23.2	24.5
<b>Seafood</b>								
Rationing system	55.3	56.7	57.9	52.2	46.7	44.6	50.3	46.9
Other	44.7	43.3	42.1	47.8	53.3	55.4	49.7	53.1
<b>Bread</b>								
Rationing system	100.0	100.0	86.4	76.6	78.6	78.0	75.9	69.9
Other	0.0	0.0	13.6	23.4	21.2	22.0	24.1	30.1

\* Other official channels include school and factory cafeterias, and restaurants.

<sup>b</sup> Preliminary.

<sup>c</sup> Excluding ice cream.

Source: *Anuario Estadístico de Cuba* (1972, 1976, 1978).





**Table 20****National Budget \***

	1957		1965		1978		1979	
	Million US \$	Percent	Million US \$	Percent	Million US \$	Percent	Million US \$	Percent
<b>Total</b>	<b>330</b>	<b>100</b>	<b>2,536</b>	<b>100</b>	<b>12,182</b>	<b>100</b>	<b>12,964</b>	<b>100</b>
Development of the economy	20	6	878	35	5,355	44	5,359	41
Health, education and other social services	130	39	696	27	3,569	29	4,039	31
Housing and community services	°	°	136	5	434	4	550	4
Public administration	89	27	137	6	718	6	714	6
National defense and public order	55	17	213	8	1,043	9	1,160	9
Other activities	0	0	0	0	531	4	623	5
Servicing the public debt	36	11	163	7	0	0	0	0
Reserves	0	0	313	12	532	4	539	4

\* There was no budget published for 1967-77.

° Included in development of the economy.

Source: *The Cuban Economy in 1979 and Prospects for 1980* (Banco Nacional de Cuba, 1979).

Foreign Economic  
Sector

Foreign Trade

Table 21

Million US \$

## Foreign Trade by Major Area

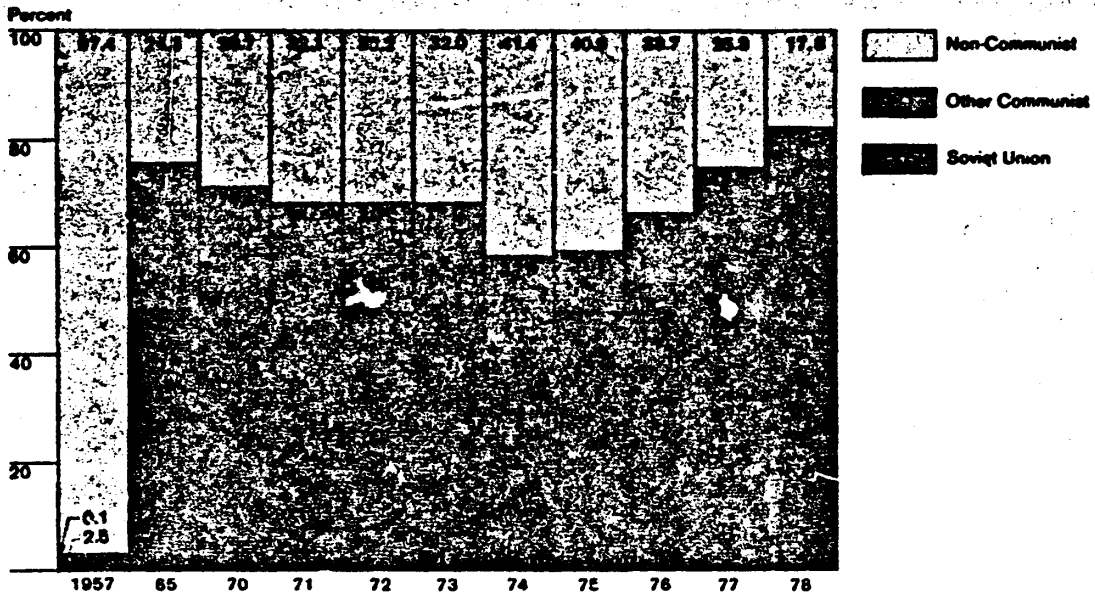
	1957	1965	1970	1971	1972	1973	1974	1975	1976	1977	1978
<b>Total exports, c.a.</b>	<b>818</b>	<b>691</b>	<b>1,050</b>	<b>861</b>	<b>840</b>	<b>1,372</b>	<b>2,707</b>	<b>3,572</b>	<b>3,284</b>	<b>3,669</b>	<b>4,545</b>
<b>Communist countries</b>	<b>42</b>	<b>529</b>	<b>778</b>	<b>557</b>	<b>451</b>	<b>880</b>	<b>1,532</b>	<b>2,401</b>	<b>2,484</b>	<b>3,056</b>	<b>3,855</b>
USSR	42	323	529	304	244	567	981	2,011	1,998	2,602	3,320
Eastern Europe	NEGL	103	150	160	137	203	382	279	353	341	397
Far East	NEGL	103	99	93	70	110	169	111	133	113	138
<b>Non-Communist countries</b>	<b>776</b>	<b>162</b>	<b>272</b>	<b>304</b>	<b>389</b>	<b>492</b>	<b>1,175</b>	<b>1,171</b>	<b>800</b>	<b>613</b>	<b>690</b>
<b>Total imports, c.l.f.</b>	<b>895</b>	<b>866</b>	<b>1,311</b>	<b>1,387</b>	<b>1,297</b>	<b>1,741</b>	<b>2,693</b>	<b>3,767</b>	<b>3,879</b>	<b>4,288</b>	<b>4,732</b>
<b>Communist countries</b>	<b>2</b>	<b>649</b>	<b>905</b>	<b>969</b>	<b>997</b>	<b>1,236</b>	<b>1,631</b>	<b>1,935</b>	<b>2,267</b>	<b>2,887</b>	<b>3,769</b>
USSR	NEGL	428	691	731	779	965	1,240	1,513	1,818	2,341	3,083
Eastern Europe	2	98	125	143	126	149	208	304	356	452	537
Far East	NEGL	123	89	95	92	122	183	118	93	94	149
<b>Non-Communist countries</b>	<b>893</b>	<b>217</b>	<b>406</b>	<b>418</b>	<b>300</b>	<b>505</b>	<b>1,062</b>	<b>1,832</b>	<b>1,612</b>	<b>1,401</b>	<b>963</b>
<b>Trade balance *</b>	<b>-77</b>	<b>-175</b>	<b>-261</b>	<b>-526</b>	<b>-457</b>	<b>-369</b>	<b>14</b>	<b>-195</b>	<b>-995</b>	<b>-619</b>	<b>-187</b>
<b>Communist countries</b>	<b>40</b>	<b>-120</b>	<b>-127</b>	<b>-412</b>	<b>-546</b>	<b>-356</b>	<b>-99</b>	<b>466</b>	<b>217</b>	<b>169</b>	<b>86</b>
USSR	42	-105	-162	-427	-535	-398	-259	498	180	261	237
Eastern Europe	-2	5	25	17	11	54	174	-25	-3	-111	-140
Far East	NEGL	-20	10	-2	-22	-12	-14	-7	40	19	-11
<b>Non-Communist countries</b>	<b>-117</b>	<b>-55</b>	<b>-134</b>	<b>-114</b>	<b>89</b>	<b>-13</b>	<b>113</b>	<b>-661</b>	<b>-812</b>	<b>-788</b>	<b>-273</b>

\* Cuban trade with non-Communist countries is based on hard currency world prices while its Communist country trade uses soft currency negotiated prices which are frequently subsidized in Cuba's favor and do not reflect real market values. The result is a more favorable global trade balance than if Cuba conducted all of its trade at world market prices.

Sources: *Anuario Estadístico de Cuba*, (1972, 1976, 1978), *Boletín Estadístico* (1970), *Cuba: Economic Development and Prospects*, (Banco Nacional de Cuba, 1978), *Comercio Exterior* (1958).

Figure 1

Total Trade by Major Area



98327212 80

Table 22

Million US \$

## Exports to Communist Countries \*

	1957	1965	1970	1971	1972	1973	1974	1975	1976	1977 <sup>b</sup>
<b>Total</b>	42	529	778	557	451	800	1,532	2,401	2,484	3,056
<b>USSR</b>	42	323	529	304	244	567	981	2,011	1,998	2,602
<b>Eastern Europe</b>	NEGL	103	150	160	137	203	382	279	353	341
Albania	0	1	1	2	1	2	2	6	6	2
Bulgaria	0	21	29	31	26	59	88	91	105	110
Czechoslovakia	NEGL	46	49	44	42	48	86	44	77	42
East Germany	0	28	49	49	42	55	125	85	96	121
Hungary	NEGL	2	4	12	8	10	24	24	37	28
Poland	NEGL	4	5	7	7	11	15	22	11	19
Romania	NEGL	1	13	15	11	18	42	7	21	19
<b>Far East</b>	NEGL	103	99	93	70	110	169	111	133	113
China	NEGL	100	75	69	51	81	157	97	121	91
Mongolia	0	0	0	0	1	NEGL	0	0	0	0
North Korea	0	2	23	23	16	27	11	13	11	11
North Vietnam	0	1	1	1	2	2	1	1	1	11

\* Exports are f.o.b.

<sup>b</sup> Preliminary.

Sources: *Anuario Estadístico de Cuba* (1972, 1976, 1978), *Boletín Estadístico* (1970), *Cuba: Economic Development and Prospects*, (Banco Nacional de Cuba, 1978), *Comercio Exterior* (1958).

Table 23

Million US \$

## Exports to Non-Communist Countries \*

	1957	1965	1970	1971	1972	1973	1974	1975	1976	1977 <sup>b</sup>
<b>Total</b>	<b>776</b>	<b>862</b>	<b>272</b>	<b>304</b>	<b>389</b>	<b>492</b>	<b>1,175</b>	<b>1,171</b>	<b>800</b>	<b>643</b>
Belgium-Luxembourg	10	1	2	3	5	8	5	8	12	11
Canada	12	5	9	11	12	22	100	77	69	50
France	11	10	14	6	18	8	14	21	32	28
Italy	3	7	14	9	15	23	34	22	26	19
Japan	56	21	108	100	150	203	465	269	78	54
Mexico	0	0	0	NEGL	NEGL	0	1	1	2	3
Morocco	19	15	8	15	5	10	7	47	42	NA
Netherlands	22	4	3	5	6	8	12	8	4	20
Spain	14	34	41	36	44	62	213	273	123	145
Sweden	5	4	9	8	14	16	46	22	54	10
United Kingdom	44	13	18	17	14	36	54	16	65	20
United States	477	0	0	0	NEGL	0	0		0	0
West Germany	37	1	3	3	4	4	7		12	10
Yugoslavia	0	6	0	NEGL	NEGL	3	20	22	66	23
Other	66	41	43	91	102	89	197	379	215	220

\* Exports are f.o.b.

<sup>b</sup> Preliminary.

Sources: Anuario Estadístico de Cuba (1972, 1976, 1978), Boletín Estadístico (1970), Cuba: Economic Development and Prospects, (Banco Nacional de Cuba, 1978), Comercio Exterior (1958).



Table 24

Million US \$

## Imports From Communist Countries •

	1957	1965	1970	1971	1972	1973	1974	1975	1976	1977 •
<b>Total</b>	<b>2</b>	<b>649</b>	<b>985</b>	<b>969</b>	<b>997</b>	<b>1,236</b>	<b>1,631</b>	<b>1,935</b>	<b>2,267</b>	<b>2,887</b>
<b>USSR</b>	<b>NEGL</b>	<b>428</b>	<b>691</b>	<b>731</b>	<b>779</b>	<b>965</b>	<b>1,240</b>	<b>1,513</b>	<b>1,818</b>	<b>2,341</b>
<b>Eastern Europe</b>	<b>2</b>	<b>98</b>	<b>125</b>	<b>143</b>	<b>126</b>	<b>149</b>	<b>208</b>	<b>304</b>	<b>356</b>	<b>452</b>
Albania	0	1	1	1	1	1	5	2	7	8
Bulgaria	NEGL	16	23	25	34	34	56	103	102	108
Czechoslovakia	2	36	30	31	37	40	50	54	46	58
East Germany	0	25	50	63	9	48	63	92	122	190
Hungary	NEGL	8	5	8	8	7	11	18	46	47
Poland	0	8	3	2	2	9	11	18	12	23
Romania	NEGL	4	13	13	9	10	12	17	21	18
<b>Far East</b>	<b>NEGL</b>	<b>123</b>	<b>89</b>	<b>95</b>	<b>92</b>	<b>122</b>	<b>183</b>	<b>118</b>	<b>93</b>	<b>94</b>
China	NEGL	120	75	79	79	103	155	105	86	82
Mongolia	0	0	NEGL	NEGL	NEGL	NEGL	NEGL	NEGL	NEGL	NEGL
North Korea	0	3	14	15	12	18	27	13	6	11
North Vietnam	0	NEGL	NEGL	1	1	1	1	0	1	1

• Imports are c.i.f.

• Preliminary.

Sources: *Anuario Estadístico de Cuba* (1972, 1976, 1978), *Boletín Estadístico* (1970), *Cuba: Economic Development and Prospects*, (Banco Nacional de Cuba, 1978), *Comercio Exterior* (1958).

Table 25

Million US \$

## Imports From Non-Communist Countries \*

	1957	1965	1970	1971	1972	1973	1974	1975	1976	1977 <sup>b</sup>
<b>Total</b>	<b>893</b>	<b>217</b>	<b>406</b>	<b>418</b>	<b>300</b>	<b>505</b>	<b>1,062</b>	<b>1,832</b>	<b>1,612</b>	<b>1,401</b>
Argentina	1	0	0	0	0	8	68	127	201	144
Belgium-Luxembourg	11	6	3	5	17	15	36	24	22	97
Canada	18	15	28	27	20	41	114	119	126	67
France	8	19	61	63	20	35	68	127	72	83
Italy	6	5	55	55	13	24	56	119	79	43
Japan	4	4	33	60	49	103	212	437	281	357
Mexico	6	3	NEGL	NEGL	14	8	15	33	35	36
Netherlands	5	6	21	16	7	7	48	62	50	34
Spain	13	47	36	33	17	48	75	184	227	208
Sweden	3	2	7	16	14	16	31	54	43	42
United Kingdom	24	50	59	61	47	64	102	155	188	57
United States	667	0	0	0	NEGL	0	0	0	0	0
West Germany	32	5	34	17	25	46	129	169	98	74
Other	95	55	69	64	57	90	108	222	190	159

\* Imports are c.i.f.

<sup>b</sup> Preliminary.

Sources: *Anuario Estadístico de Cuba* (1972, 1976, 1978), *Boletín Estadístico* (1970), *Cuba: Economic Development and Prospects* (Banco Nacional de Cuba, 1978), *Comercio Exterior* (1958).

Table 26

Million US \$

## Value of Exports by Major Commodity \*

	1957	1965	1970	1971	1972	1973	1974	1975	1976	1977 <sup>b</sup>
<b>Total</b>	818	691	1,030	861	840	1,372	2,707	3,572	3,284	3,669
<b>Sugar</b>	654	591	806	657	622	1,032	2,336	3,209	2,855	3,060
Raw and refined	629	579	785	634	602	1,011	2,299	3,183	2,832	NA
Molasses	25	12	21	23	20	21	37	26	23	NA
<b>Minerals</b>	47	50	175	136	125	190	171	169	201	239
Nickel	32	40	173	136	124	182	167	164	193	NA
Other	15	10	2	NEGL	1	8	4	5	8	NA
<b>Tobacco</b>	48	33	33	32	40	62	73	63	74	84
Raw	37	19	15	14	15	23	25	22	26	NA
Manufactured	11	14	18	18	25	39	48	41	48	NA
<b>Foodstuffs</b>	12	5	29	31	45	86	120	131	153	285
Of which:										
Fish and shellfish	7	3	19	22	29	40	59	63	79	84
Citrus	2	1	3	3	5	10	15	14	16	NA
<b>Other</b>	57	12	7	5	8	2	7	0	1	1

\* Exports are f.o.b.

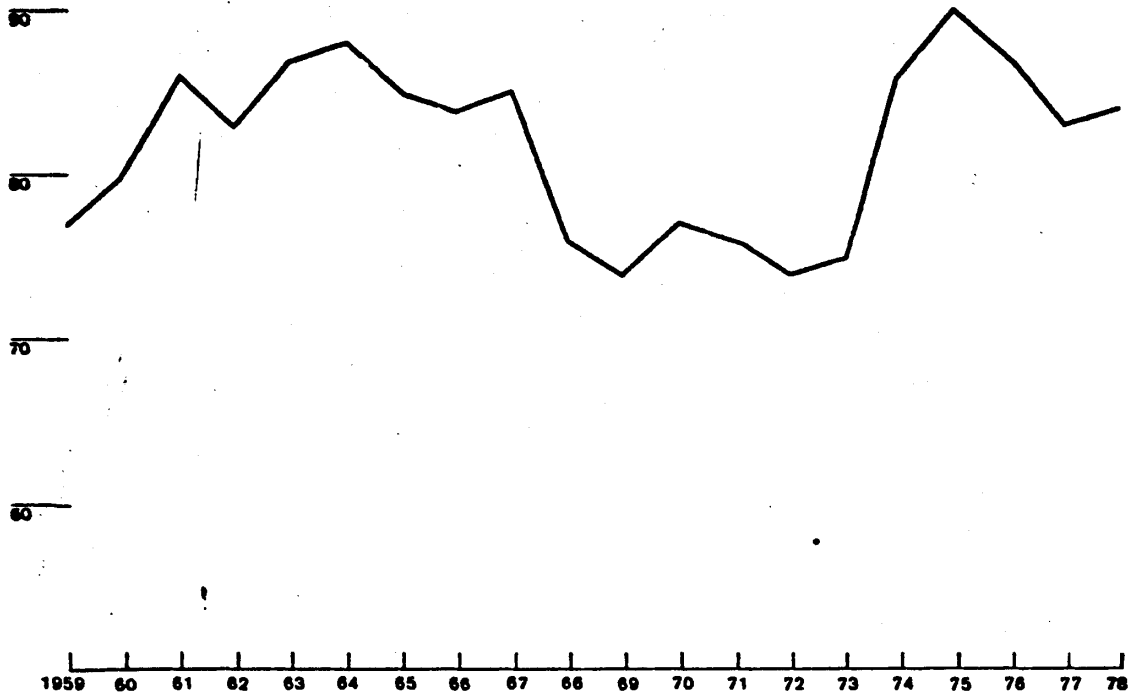
<sup>b</sup> Preliminary.

Sources: *Anuario Estadístico de Cuba* (1972, 1976, 1978), *Boletín Estadístico* (1970), *Cuba: Economic Development and Prospects* (Banco Nacional de Cuba, 1978), *Comercio Exterior* (1958).

**Figure 2**

**Sugar as a Share of Total Export Value**

Percent  
100



1982/70 12 80

**Table 27**Thousand Metric Tons  
Except as Noted**Volume of Exports by Major Commodity**

	1957	1965	1970	1971	1972	1973	1974	1975	1976	1977
<b>Sugar *</b>										
Raw	4,642.0	5,315.6	6,065.1	4,684.5	3,428.2	4,073.4	4,811.5	5,195.6	5,743.7	6,238.0
Refined	520.0	741.6	592.0	619.4	549.8	477.2	374.9	241.8		
Molasses and syrup	740.0	588.6	950.3	948.0	671.8	500.4	580.6	442.9	503.9	575.7
<b>Minerals</b>										
Nickel	31.6	28.2	35.6	33.2	31.7	38.3	34.0	30.8	34.6	44.1
Refractory chrome	98.9	30.7	28.5	0.7	1.0	18.4	14.3	38.9	26.7	NA
Other	414.2	NA	0.8	0	1.3	NA	NA	NA	NA	NA
<b>Foodstuffs</b>										
Citrus fruits	2.1	7.9	27.0	25.2	34.8	49.8	56.0	59.7	61.2	83.6
Fresh fish and shellfish	2.8	0.5	13.1	13.1	14.1	18.2	23.7	17.7	16.8	19.7
<b>Tobacco</b>										
Raw	25.2	17.8	13.9	10.8	12.0	15.5	15.6	14.2	15.4	NA
Cigars (million units)	71.8	52.7	54.3	80.8	94.3	100.4	123.2	88.2	120.5	116.3
Cigarettes (million units)	23.7	886.1	1,720.5	532.7	625.1	2,145.0	2,513.0	2,872.0	1,532.0	2,142.0

\* Data differs slightly from International Sugar Organization data which are based on 96° polarization.

Sources: *Anuario Estadístico de Cuba* (1972, 1976, 1978), *Boletín Estadístico* (1970), *Guía Estadística* (1979), *Comercio Exterior* (1958), *Cuba en Cifras* (1979).

**Table 28**

Million US \$

**Value of Imports by Major Commodity \***

	1965	1970	1971	1972	1973	1974	1975	1976
<b>Total</b>	<b>866</b>	<b>1,311</b>	<b>1,367</b>	<b>1,297</b>	<b>1,741</b>	<b>2,693</b>	<b>3,767</b>	<b>3,879</b>
<b>Foodstuffs</b>	<b>205</b>	<b>263</b>	<b>316</b>	<b>324</b>	<b>411</b>	<b>684</b>	<b>718</b>	<b>723</b>
<b>Raw material and intermediate goods</b>	<b>64</b>	<b>138</b>	<b>127</b>	<b>118</b>	<b>157</b>	<b>233</b>	<b>357</b>	<b>255</b>
<b>Fuel</b>	<b>85</b>	<b>114</b>	<b>127</b>	<b>163</b>	<b>194</b>	<b>241</b>	<b>377</b>	<b>423</b>
<b>Of which:</b>								
<b>Petroleum</b>	<b>81</b>	<b>110</b>	<b>121</b>	<b>157</b>	<b>189</b>	<b>237</b>	<b>372</b>	<b>418</b>
<b>Machinery and transportation equipment</b>	<b>133</b>	<b>368</b>	<b>390</b>	<b>245</b>	<b>365</b>	<b>552</b>	<b>911</b>	<b>1,220</b>
<b>Manufactures</b>	<b>153</b>	<b>131</b>	<b>138</b>	<b>149</b>	<b>215</b>	<b>341</b>	<b>465</b>	<b>399</b>
<b>Other</b>	<b>226</b>	<b>297</b>	<b>289</b>	<b>298</b>	<b>399</b>	<b>642</b>	<b>939</b>	<b>859</b>

\* Consistent data for 1957 is not available. Imports are c.i.f.

Sources: *Anuario Estadístico de Cuba* (1972, 1976, 1978), *Boletín Estadístico* (1970), *Comercio Exterior* (1958).

Table 29

Thousand Metric Tons  
Except as Noted

## Volume of Imports by Major Commodity

	1957	1965	1970	1971	1972	1973	1974	1975	1976	1977
<b>Foodstuffs</b>										
Rice (milled)	192	282	199	280	256	201	276	200	179	144
Wheat	95	265	347	401	476	412	497	506	496	NA
Wheat flour	94	231	277	346	308	332	332	320	390	354
Corn	0	NA	170	153	172	260	301	365	436	325
Fruits and legumes	62	68	133	136	121	139	158	118	141	NA
Lard	81	39	69	74	53	61	71	91	78	NA
Canned milk	11	22	17	19	19	19	18	14	21	NA
<b>Raw materials and intermediate goods</b>										
Raw cotton	9	23	20	19	19	19	17	23	18	NA
Crude vegetable oil	6	47	55	66	54	66	59	63	67	NA
Wood pulp	24	18	20	39	31	32	40	58	40	22
Rubber (raw and synthetic)	6	6	13	7	6	19	11	13	14	12
Sulfur	18	68	130	179	123	144	140	169	153	NA
Caustic soda	23	23	22	33	19	29	27	57	33	35
Cast iron	NEGL	32	77	79	96	108	115	156	203	204
Tin plate	23	23	38	40	39	17	44	54	53	63
Coke	40	31	58	75	88	59	42	41	45	NA
Fertilizer	312	444	975	614	652	873	798	941	927	NA
Cotton cloth (million square meters)	4	9	58	57	53	64	55	74	71	62
<b>Fuel</b>										
Crude petroleum	1,900	3,483	4,261	4,757	4,749	5,243	5,875	5,797	5,783	6,201
Fuel oil	800	791	1,148	1,409	1,315	1,303	1,252	1,328	1,487	NA
Gasoline	255	128	46	86	13	49	49	44	70	NA
Gas oil (diesel)	NA	181	483	488	545	489	492	481	802	NA
<b>Transportation equipment (units)</b>										
Locomotives	24	NA	20	7	1	3	109	13	68	49
Autos	23,765	NA	1,611	2,037	1,085	2,126	8,804	8,991	12,328	NA
Trucks	2,755	2,928	4,090	5,274	3,264	3,047	4,916	6,662	5,589	NA
Buses	160	430	391	998	191	1,257	1,609	1,794	2,261	427
Tractors	2,484	6,574	5,524	7,024	3,024	3,608	3,483	3,342	11,353	NA

Sources: Anuario Estadístico de Cuba (1972, 1976, 1978), Boletín Estadístico (1970), Comercio Exterior (1958), Cuba en Cifras (1979).

Table 30

Thousand Metric Tons

## Sugar Exports to Communist Countries

	1957	1965	1970	1971	1972	1973	1974	1975	1976	1977	1978	1979
<b>Total</b>	<b>365</b>	<b>3,525</b>	<b>4,882</b>	<b>3,278</b>	<b>2,294</b>	<b>3,012</b>	<b>3,266</b>	<b>4,031</b>	<b>4,114</b>	<b>4,738</b>	<b>5,184</b>	<b>5,206</b>
<b>USSR</b>	<b>358</b>	<b>2,456</b>	<b>3,105</b>	<b>1,581</b>	<b>1,097</b>	<b>1,661</b>	<b>1,975</b>	<b>3,187</b>	<b>3,036</b>	<b>3,790</b>	<b>3,936</b>	<b>3,842</b>
<b>Eastern Europe</b>	<b>7</b>	<b>584</b>	<b>961</b>	<b>960</b>	<b>696</b>	<b>834</b>	<b>795</b>	<b>521</b>	<b>675</b>	<b>631</b>	<b>615</b>	<b>740</b>
Albania	0	11	11	23	15	14	13	14	13	8	21	25
Bulgaria	0	158	231	211	154	213	190	186	232	219	190	218
Czechoslovakia	0	245	227	190	151	163	160	56	109	67	85	99
East Germany	7	170	353	338	243	259	276	169	195	229	201	223
Hungary	0	0	16	59	38	52	51	42	70	51	58	72
Poland	0	0	24	30	22	55	28	43	17	31	60	64
Romania	0	0	99	109	73	78	78	11	39	26	0	39
<b>Far East</b>	<b>0</b>	<b>485</b>	<b>736</b>	<b>737</b>	<b>501</b>	<b>517</b>	<b>495</b>	<b>323</b>	<b>403</b>	<b>317</b>	<b>633</b>	<b>624</b>
China	0	398	530	464	295	302	359	183	254	228	534	486
Mongolia	0	0	0	0	11	3	3	3	2	2	5	5
North Korea	0	21	149	197	119	136	55	50	22	19	12	22
Vietnam	0	66	57	76	76	76	78	87	125	68	82	111

Source: International Sugar Organization's *Statistical Bulletins* (1965, 1973, 1976, and 1980) and *ISO Yearbook* (1960).



Table 31

Thousand Metric Tons

## Sugar Exports to Non-Communist Countries \*

	1957	1965	1970	1971	1972	1973	1974	1975	1976	1977	1978	1979
<b>Total</b>	<b>4,942</b>	<b>1,791</b>	<b>2,107</b>	<b>2,233</b>	<b>1,846</b>	<b>1,785</b>	<b>2,325</b>	<b>1,713</b>	<b>1,650</b>	<b>1,550</b>	<b>2,047</b>	<b>2,063</b>
Algeria	0	18	33	25	25	6	7	46	35	51	176	203
Angola	0	0	0	0	0	0	0	0	32	51	68	34
Canada	95	69	65	73	31	47	116	156	149	139	279	316
Egypt	0	126	32	43	21	5	0	14	23	72	127	111
Ethiopia	0	0	0	0	0	0	0	0	0	11	0	0
Finland	0	0	0	12	16	26	83	96	71	131	88	102
Indonesia	0	0	0	0	0	0	0	0	0	141	105	133
Iran	5	73	0	25	52	0	0	0	0	0	0	0
Iraq	8	126	21	52	56	0	65	78	83	87	191	248
Japan	460	415	1,221	912	909	985	1,152	339	150	183	530	297
Malaysia	NEGL	NEGL	215	141	88	29	64	0	19	0	64	25
Morocco	189	182	106	165	55	62	41	100	179	166	132	12
New Zealand	0	0	0	0	0	13	39	94	35	17	0	59
Portugal	10	42	0	0	0	0	52	116	92	26	142	117
Spain	30	174	143	82	98	104	363	327	115	159	0	80
Sweden	16	42	60	47	65	56	51	35	108	35	0	0
Syria	21	62	98	116	101	107	41	53	106	109	87	141
United Kingdom	424	113	0	51	29	122	71	17	139	0	0	13
United States	2,783	0	0	0	0	0	0	0	0	0	0	0
Yugoslavia	22	85	0	72	43	12	50	61	266	13	0	0
Other	879	264	108	417	257	211	30	181	118	109	58	152

\* Raw value.

Source: International Sugar Organization's *Statistical Bulletin* (1965, 1973, 1976, and 1980) and *ISO Yearbook* (1960).

Table 32

US Cents Per Pound

## Sugar Export Prices in Principal Cuban Markets

	1957	1965	1970	1971	1972	1973	1974	1975	1976	1977	1978 <sup>a</sup>	1979 <sup>a</sup>
<b>Communist Countries<sup>b</sup></b>												
USSR	5.4	6.1	6.1	6.1	6.1	12.2	19.6	31.5	30.2	31.2	42.0	44.0
Eastern Europe	5.4	6.1	5.6	5.9	6.1	8.6	19.6	19.6	19.6	20.8	21.7	22.3
China	<sup>c</sup>	6.1	6.1	6.1	6.1	11.0	17.0	23.6	21.3	11.5	8.0	8.0
<b>Non-Communist Countries</b>												
United States <sup>c</sup>	5.3											
Average world market price <sup>d</sup>	5.0	2.1	3.8	4.5	7.4	9.6	30.0	20.3	11.6	8.1	7.8	9.6

<sup>a</sup> Estimated.<sup>b</sup> Export prices for raw sugar, f.o.b., under the trade protocols.<sup>c</sup> No sugar purchased by China in 1957; no sugar purchased by the United States 1965 to 1979.<sup>d</sup> Average annual export price, f.o.b., Caribbean ports; actual price received by Cuba may differ because of seasonality of deliveries.

Sources: *International Financial Statistics* (IMF), *Anuario Estadístico de Cuba* (1972, 1976, 1978), *Comercio Exterior* (1958).

Balance  
of Payments

Table 33

Million US \$

Hard Currency Balance of Payments <sup>a</sup>

	1970	1971	1972	1973	1974	1975	1976	1977	1978
Trade balance	-134	-114	89	-13	113	-211	-612	-593	-148
Exports, f.o.b.	272	304	389	492	1,175	1,621	1,000	808	815
Non-Communist countries	272	304	389	492	1,175	1,171	800	613	690
USSR <sup>b</sup>	0	0	0	0	NEG.	450	200	195	125
Imports, c.i.f.	406	418	300	505	1,062	1,832	1,612	1,401	963
Interest payments	-26	-35	-40	-55	-70	-45	-55	-105	-190
Other current transactions <sup>c</sup>	20	20	20	25	25	10	25	40	62
Current account balance	-140	-129	69	-43	68	-246	-642	-658	-276
Cumulative debt (yearend)	462	591	522	565	497	743	1,385	2,043	2,319

<sup>a</sup> Estimated.<sup>b</sup> Soviet hard currency purchases of Cuban sugar outside the Cuban-Soviet trade protocol at world market prices.<sup>c</sup> Includes primarily receipts from tourism and ship chartering.Sources: *Anuario Estadístico de Cuba (1976)*, *Cuba: Economic Development and Prospects*, (Banco Nacional de Cuba, 1978).

Finance

Table 34

## Official Peso Exchange Rate

	Value in US \$
1957-60	1.00
1961-71	1.00
1972	1.09
1973	1.19
1974	1.21
1975	1.21
1976	1.22
1977	1.26
1978	1.33
1979	1.38

Source: *The Cuban Economy in 1979 and Prospects for 1980* (Banco Nacional de Cuba, 1979).

Table 35

Million US \$

## Soviet Economic Assistance \*

	Annual Average 1961-70	1971	1972	1973	1974	1975	1976	1977	1978	1979
Balance-of-payments aid	255	509	632	437	289	150	150	210	330	440
Trade and development aid	216	427	535	404	255	115	115	175	295	405
Interest charges	17	57	69	0	0	0	0	0	0	0
Other in-visibles	22	25	28	33	34	35	35	35	35	35
Total repayable aid (cumulative)	2,590 <sup>b</sup>	3,059	3,691	4,128	4,417	4,567	4,717	4,927	5,257	5,697
Subsidies	102	56	0	150	407	901	1,357	1,772	2,638	2,667
Sugar subsidy <sup>c</sup>	102	56	0	97	NEGL	580	977	1,428	2,435	2,287
Petroleum subsidy <sup>d</sup>	0	0	0	0	369	290	362	328	165	365
Nickel subsidy <sup>c</sup>	0	0	0	53	38	31	18	16	38	15
Total grants (cumulative)	1,018 <sup>b</sup>	1,074	1,074	1,224	1,431	2,532	3,889	5,661	8,299	10,966
Total economic assistance (cumulative)	3,608 <sup>b</sup>	4,133	4,765	5,352	6,048	7,099	8,606	10,588	13,556	16,663

\* Estimates based on official Cuban and Soviet trade data.

<sup>b</sup> Cumulative aid and grant totals are for the entire period 1961-70.

<sup>c</sup> The sugar and nickel subsidies are estimated as the difference between the values of sugar and nickel exports to the USSR and the value of these exports if sold at average world market prices. They are considered a grant and not subject to repayment.

<sup>d</sup> The petroleum subsidy reflects the difference between the value of petroleum purchased from the USSR and the value of these imports at world market prices. It is considered a grant and not subject to repayment.

Sources: *Anuario Estadístico de Cuba* (1972, 1974, 1978), *Cuba in Crisis* (1979), *Cuba: Economic Development and Prospects* (Banco Nacional de Cuba, 1978), *Vneshnyaya Torgovlya USSR* (1978).

Table 36

Million US \$

## Foreign Trade Adjusted for Price Subsidies \*

	Annual Average 1961-70	1971	1972	1973	1974	1975	1976	1977	1978
Total exports, f.o.b.	677	861	840	1,372	2,707	3,572	3,284	3,669	4,545
Less Soviet sugar and nickel subsidies <sup>b</sup>	102	56	0	150	38	611	99	1,444	2,473
Adjusted total exports	575	805	840	1,222	2,669	2,961	2,289	2,225	2,072
Total imports, c.i.f.	971	1,387	1,297	741	2,693	3,767	3,879	4,288	4,732
Plus Soviet oil subsidy <sup>b</sup>	0	0	0	0	369	290	362	328	165
Adjusted imports	971	1,387	1,297	1,741	3,062	4,057	4,241	4,616	4,897
Trade balance	-294	-526	-457	-369	14	-195	-595	-619	-187
Adjusted trade balance	-396	-582	-457	-519	-393	-1,096	-1,952	-2,391	-2,825

\* Estimates based on official Cuban and Soviet trade data.

<sup>b</sup> See table 35 for derivation of Soviet price subsidies.Sources: *Anuario Estadístico de Cuba* (1972, 1976, 1978), Cuba: *Economic Development and Prospects* (Banco Nacional de Cuba, 1978), *Vneshnaya Torgovlya USSR* (1978).

Population and  
Labor Force



**Table 37**Thousand Persons  
at Midyear**Population**

1965	7,810
1966	7,985
1967	8,139
1968	8,284
1969	8,421
1970	8,551
1971	8,690
1972	8,860
1973	9,034
1974	9,192
1975	9,336
1976	9,471
1977	9,593
1978	9,694
1979	9,775

Source: *Anuario Estadístico de Cuba* (1972, 1976, 1978), *Cuba en Cifras* (1979).

**Table 38**

Thousand Persons

**Civilian Employment by Economic Sector**

	1962	1964	1966	1971	1972	1973	1974	1975	1976	1977*
<b>Total</b>	1,823	1,885	1,993	2,402	2,426	2,526	2,573	2,623	2,669	2,790
<b>State sector</b>	1,083	1,369	1,517	2,082	2,126	2,246	2,313	2,391	2,469	2,608
Agriculture	297	386	450	604	637	670	675	685	685	628
Manufacturing, mining, Utilities	267	303	323	440	438	453	467	472	477	564
Construction	104	108	118	133	154	177	183	200	243	296
Transportation and communication	74	82	82	175	177	182	186	187	199	177
Commerce	132	216	235	168	166	177	184	179	179	281
Services and administration	209	274	309	562	554	587	618	660	686	662
<b>Private sector</b>	740	516	476	320	300	280	260	232	200	182

\* Preliminary.

Source: *Cuba: Economic Development and Prospects* (Banco Nacional de Cuba, 1978).

Sorteconomics  
Comparisons



Table 39

Percent

## Adult Literacy Rate

	1960		1975
United States	98	United States	99 <sup>a</sup>
Argentina	91	Cuba	96
Jamaica	82	Argentina	93
Cuba	80	Costa Rica	88 <sup>a</sup>
Philippines	72	Philippines	87
Mexico	65	Jamaica	86
Brazil	61	Brazil	76 <sup>a</sup>
Middle-income LDC average	51	Mexico	76
Low-income LDC average	29	Middle-income LDC average	69
India	28	India	36
Costa Rica	NA	Low-income LDC average	36

<sup>a</sup> Data are within two years of year specified.

Source: *World Development Report* (World Bank, 1979).

Table 41

Percent

## School Enrollment as a Share of Age Group, Secondary (Aged 12 to 19 Years)

	1960		1976
United States	64	Jamaica	58 <sup>a</sup>
Jamaica	43	Argentina	56
Argentina	32	Philippines	56 <sup>a</sup>
Philippines	26	Cuba	47
Costa Rica	21	Costa Rica	43
India	20	Mexico	37
Middle-income LDC average	16	Middle-income LDC average	36
Cuba	14	India	28
Low-income LDC average	14	Low-income LDC average	24
Brazil	11	Brazil	18 <sup>a</sup>
Mexico	11	United States	NA

<sup>a</sup> Data are within two years of year specified.

Source: *World Development Report* (World Bank, 1979).

Table 40

Percent

School Enrollment as a Share of Age Group, Primary (Aged 6 to 11 Years)<sup>a</sup>

	1960		1976
United States	118	Cuba	122
Cuba	109	Mexico	116
Argentina	98	Costa Rica	111
Costa Rica	96	Argentina	108 <sup>a</sup>
Brazil	95	Philippines	105 <sup>a</sup>
Philippines	95	Jamaica	98 <sup>a</sup>
Jamaica	82	Middle-income LDC average	92
Mexico	80	Brazil	90 <sup>a</sup>
Middle-income LDC average	79	India	79
India	61	Low-income LDC average	73
Low-income LDC average	51	United States	NA

<sup>a</sup> The enrollment ratios may exceed 100 percent for countries that have universal primary education since some pupils may be below or above the official primary school age.

<sup>b</sup> Data are within two years of year specified.

Source: *World Development Report* (World Bank, 1979).

Table 42

Percent

## School Enrollment as a Share of Age Group, Higher Education (Aged 20 to 24 Years)

	1960		1976
United States	32	United States	58
Philippines	13	Argentina	28
Argentina	11	Philippines	20
Costa Rica	5	Costa Rica	17
Middle-income LDC average	4	Cuba	11
Cuba	3	Brazil	10 <sup>a</sup>
India	3	Mexico	10
Mexico	3	Middle-income LDC average	10
Brazil	2	India	7
Jamaica	2	Jamaica	7 <sup>a</sup>
Low-income LDC average	2	Low-income LDC average	5

<sup>a</sup> Data are within two years of the year specified.

Source: *World Development Report* (World Bank, 1979).

Table 43

Years

## Life Expectancy at Birth

	1960		1977
United States	70	United States	73
Argentina	65	Philippines	71
Cuba	64	Costa Rica	70
Jamaica	64	Cuba	70
Costa Rica	62	Jamaica	70
Mexico	58	Mexico	65
Brazil	57	Brazil	62
Middle-income LDC average	53	Philippines	60
Philippines	51	Middle-income LDC average	60
India	43	India	51
Low-income LDC average	42	Low-income LDC average	50

Source: World Development Report (World Bank, 1979).

Table 44

Per Thousand Live Births

## Infant Mortality Rate (Aged 0 to 1 Year)

	1960		1977
United States	26	United States	15*
Cuba	36	Jamaica	20
Jamaica	63*	Cuba	25
Mexico	78	Costa Rica	38*
Philippines	98	Mexico	50
Brazil	NA	Philippines	72
Costa Rica	NA	Brazil	96
India	NA	India	122

\* Data are within two years of the year specified.

Sources: World Development Report (World Bank, 1979), Cuba en Cifras (1979).

Table 45

Per Thousand Persons

## Crude Birth Rate

	1960		1977
Costa Rica	47	Low-income LDC average	40
Low-income LDC average	46	Mexico	38
Philippines	45	Brazil	36
Mexico	45	Middle-income LDC average	35
India	43	Philippines	35
Middle-income LDC average	42	India	35
Brazil	40	Jamaica	29
Jamaica	39	Costa Rica	28
Cuba	30	Argentina	21
United States	24	Cuba	18*
Argentina	24	United States	15

\* Data for 1979.

Sources: World Development Report (World Bank, 1979), Cuba en Cifras (1979).

Table 46

Per Thousand Persons

## Crude Death Rate

	1960		1977
Cuba	6	Costa Rica	5
Argentina	9	Cuba	6*
Jamaica	9	Jamaica	7
United States	9	Argentina	8
Costa Rica	10	Mexico	8
Brazil	11	Brazil	9
Mexico	12	Philippines	9
Philippines	15	United States	9
Middle-income LDC average	15	Middle-income LDC average	11
India	21	India	14
Low-income LDC average	23	Low-income LDC average	15

\* Data for 1979.

Sources: World Development Report (World Bank, 1979), Cuba en Cifras (1979).

Table 47

Persons

## Population Per Physician

	1960		1976
Argentina	660	Argentina	530 <sup>a</sup>
United States	780	Cuba	660 <sup>a</sup>
Cuba	1,200 <sup>a</sup>	United States	660
Mexico	1,700	Costa Rica	1,350
Costa Rica	2,600	Brazil	1,650 <sup>a</sup>
Jamaica	2,600	Mexico	1,840
Brazil	3,600 <sup>a</sup>	India	3,140 <sup>a</sup>
India	5,800	Philippines	3,150 <sup>a</sup>
Middle-income LDC average	6,840	Jamaica	3,510
Low-income LDC average	18,700	Middle-income LDC average	4,470
Philippines	NA	Low-income LDC average	10,300

<sup>a</sup> Data are within three years of year specified.

Sources: Speech by Fidel Castro at Las Tunas on 14 June 1980, *World Development Report* (World Bank, 1979).

Table 48

## Diet

	Daily Caloric Intake <sup>a</sup>	Daily Protein Intake <sup>b</sup> (Grams)	
United States	3,504	United States	103
Argentina	3,408	Argentina	99
Cuba	2,728 <sup>c</sup>	Cuba	70
Mexico	2,727	Mexico	65
Jamaica	2,664	Brazil	64
Middle-income LDC average	2,557	Costa Rica	63
Costa Rica	2,537	Jamaica	56
Brazil	2,516	India	53
Low-income LDC average	2,036	Philippines	45
India	1,976	Middle-income LDC average	NA
Philippines	1,971	Low-income LDC average	NA

<sup>a</sup> Data are for 1974. Recommended middle income average requirement for 1974 was 2,390 calories.

<sup>b</sup> Data are for the most recent year.

<sup>c</sup> Figure for 1979.

Sources: *World Development Report* (World Bank, 1979), Speech by Fidel Castro at Las Tunas on 14 June 1980, *Statistical Abstract of the United States*.

**Table 49**

Percent

**Average Annual Population Growth Rate**

	1960-70		1971-77
United States	1.3	United States	1.3
Argentina	1.4	Argentina	1.3
Jamaica	1.4	Cuba	1.6
Cuba	2.0	Jamaica	1.7
India	2.3	India	2.1
Low-income LDC average	2.4	Low-income LDC average	2.3
Middle-income LDC average	2.5	Costa Rica	2.5
Brazil	2.9	Middle-income LDC average	2.6
Philippines	3.0	Philippines	2.7
Mexico	3.3	Latin America average	2.8*
Costa Rica	3.4	Brazil	2.9
Latin America average	NA	Mexico	3.3

\* Figure is for 1970-78.

Sources: *World Development Report* (World Bank, 1979), *Economic and Social Progress in Latin America* (Inter-American Development Bank, 1978).**Table 50**

Percent

**Urban Population as a Share of Total Population**

	1960		1975
Argentina	74	Argentina	81
United States	66	United States	70
Cuba	55	Cuba	63
Mexico	51	Mexico	63
Latin America average	50	Latin America average	63*
Brazil	46	Brazil	61
Costa Rica	37	Middle-income LDC average	47
Middle-income LDC average	37	Jamaica	46
Jamaica	34	Costa Rica	41
Philippines	30	Philippines	34
India	18	India	21
Low-income LDC average	15	Low-income LDC average	19

\* Figure is for 1978.

Sources: *World Development Report* (World Bank, 1979), *Economic and Social Progress in Latin America* (Inter-American Development Bank, 1978).

Economic Indicators



Table 51

US \$

## GNP per Capita, 1978

Argentina	1,680 <sup>a</sup>
Brazil	1,590
Costa Rica	1,580
Mexico	1,440 <sup>b</sup>
Cuba	1,300 <sup>a</sup>
Jamaica	1,160
Philippines	510
India	180

<sup>a</sup> Estimated.<sup>b</sup> GDP per capita.Sources: *International Financial Statistics Yearbook*, (IMF 1980).

Table 52

US \$

Merchandise Trade Balance per Capita<sup>a</sup>

	1960		1978
Cuba	4.1	Argentina	96.0
India	-2.2	India	-1.9
Brazil	-2.7	Cuba	-19.3
Philippines	-3.2	Brazil	-21.6
Argentina	-8.3	Mexico	-27.3
Mexico	-11.4	Philippines	-36.9
Costa Rica	-18.4	Jamaica	-39.6
Jamaica	-31.4	Costa Rica	-141.2

<sup>a</sup> Exports, f.o.b., less imports, c.i.f., divided by midyear population.Sources: *Cuba: Economic Development and Prospects* (Banco Nacional de Cuba, 1978), *International Financial Statistics Yearbook* (IMF 1980), *Comercio Exterior* (1960), *Cuba en Cifras* (1979).

Table 53

## Foreign Economic Dependency, 1978

	Exports, f.o.b., as a Percent of GNP		Imports, c.i.f., as a Percent of GNP
India	6	India	7
Brazil	7	Brazil	8
Mexico	7 <sup>a</sup>	Argentina	8
Argentina	14	Mexico	9 <sup>a</sup>
Philippines	14	Philippines	22
Costa Rica	26	Jamaica	34
Jamaica	30	Costa Rica	35
Cuba	34 <sup>b</sup>	Cuba	36 <sup>b</sup>

<sup>a</sup> GDP, rather than GNP, used.<sup>b</sup> Estimated.Sources: *International Financial Statistics Yearbook* (IMF, 1980), *Cuba: Economic Development and Prospects* (Banco Nacional de Cuba, 1978).

Table 54

Percent

## Average Annual Real GDP Growth Rate, 1960-78

Brazil	9.1 <sup>a</sup>
Latin America LDC average	6.4
Costa Rica	6.2
Mexico	6.2
Non-OPEC LDC average	6.1
Philippines	5.7 <sup>b</sup>
India	3.7
Argentina	3.4
Cuba	2.8 <sup>c</sup>
Jamaica	2.6

<sup>a</sup> Figures is for 1963-78.<sup>b</sup> Average annual rate for GNP.<sup>c</sup> Estimate for 1959-78.Sources: *International Financial Statistics Yearbook* (IMF, 1980).

**Table 55** Percent**Average Annual Trade Growth Rates, 1959-78**

	Exports (f.o.b.)		Imports (c.i.f.)
Costa Rica	13.6	Costa Rica	13.6
Brazil	12.7	Brazil	13.4
Mexico	12.0	Philippines	12.0
Philippines	10.0	Mexico	11.6
Argentina	10.2	Cuba	9.5
Cuba	9.6	India	7.6
India	8.8	Jamaica	7.6*
Jamaica	8.5*	Argentina	7.4

\* Figure is for 1960-78.

Source: *International Financial Statistics* (IMF, 1960, 1980).**Table 56** US \$**Exports (f.o.b.) per Capita**

	1960		1978
Jamaica	101	Cuba	469
Cuba	86*	Costa Rica	406
Costa Rica	70	Jamaica	353
Argentina	52	Argentina	239
Mexico	21	Brazil	107
Philippines	21	Mexico	101
Brazil	18	Philippines	74
India	3	India	10

\* Figure for year; Cuba is for 1958.

Sources: *Cuba: Economic Development and Prospects* (Banco Nacional de Cuba, 1978), *International Financial Statistics Yearbook* (IMF, 1980), *Comercio Exterior 1960*, *Cuba en Cifras* (1979).**Table 57** US \$**Imports (c.i.f.) per Capita**

	1960		1978
Jamaica	132	Costa Rica	547
Costa Rica	88	Jamaica	493
Cuba	82	Cuba	488
Argentina	61	Argentina	143
Mexico	33	Brazil	129
Philippines	24	Mexico	128
Brazil	20	Philippines	111
India	5	India	12

Sources: *Comercio Exterior* (1960), *Cuba: Economic Development and Prospects* (Banco Nacional de Cuba, 1978), *International Financial Statistics Yearbook* (IMF, 1980), *Cuba en Cifras* (1979).

Table 58

Percent

## Labor Force by Sector

	Agriculture		Industry		Services	
	1960	1977	1960	1977	1960	1977
United States	10	4	36	33	57	64
Argentina	20	14	36	29	44	57
Jamaica	39	24	25	27	36	49
Costa Rica	51	30	18	29	31	41
Mexico	55	24	20	25	25	41
Cuba	42 <sup>a</sup>	29	28 <sup>a</sup>	31	30 <sup>a</sup>	40
Brazil	52	42	15	20	33	38
Philippines	61	51	15	15	24	34
Middle-income LDC average	59	46	17	22	24	32
India	73	73	11	11	16	16
Low-income LDC average	77	73	9	11	14	16

<sup>a</sup> Figures for 1962.

Sources: *World Development Report* (World Bank, 1979). *The Labor Sector and Socialist Distribution in Cuba* by Carmelo Mesa-Lago.

Table 59

Percent

## Dependency Ratio and Unemployment

	Dependency Ratio <sup>a</sup>		Unemployment Rate
United States (1979)	2.10	Cuba (1977)	3.0 <sup>b</sup>
Jamaica (1978)	2.27	Argentina (1978)	3.9 <sup>b</sup>
Argentina (1978)	2.59	Costa Rica (1977)	4.9
Brazil (1976)	2.75	Philippines (1976)	5.0
Philippines (1976)	2.87	United States (1979)	5.8
Costa Rica (1977)	3.15	Mexico (1979)	7.1
Cuba (1977)	3.45	Jamaica (1978)	24.5
Mexico (1979)	3.53	Brazil (1976)	NA

<sup>a</sup> Midyear population divided by total labor force.

<sup>b</sup> Estimated.

Source: *Yearbook of Labour Statistics* (International Labor Organization, 1979).

**Table 60****Estimated Income Distribution <sup>a</sup>**

		Lowest 20 Percent	2d Quintile	3d Quintile	4th Quintile	Highest 20 Percent	Highest 10 Percent
Cuba <sup>b</sup>	1973	7.8	12.5	19.2	25.5	35.0	19.9
United States	1972	4.5	10.7	17.3	24.7	42.8	26.6
India	1964-65	6.7	10.5	14.3	19.6	48.9	35.2
Argentina	1970	4.4	9.7	14.1	21.5	50.3	35.2
Philippines	1970-71	3.7	8.2	13.2	21.0	53.9	NA
Costa Rica	1971	3.3	8.7	13.3	19.9	54.8	39.5
Mexico	1977	2.9	7.4	13.2	22.0	54.5	36.7
Cuba <sup>b</sup>	1953	2.1	4.1	11.0	22.8	60.0	38.5
Brazil	1972	2.0	5.0	9.4	17.0	66.6	50.6

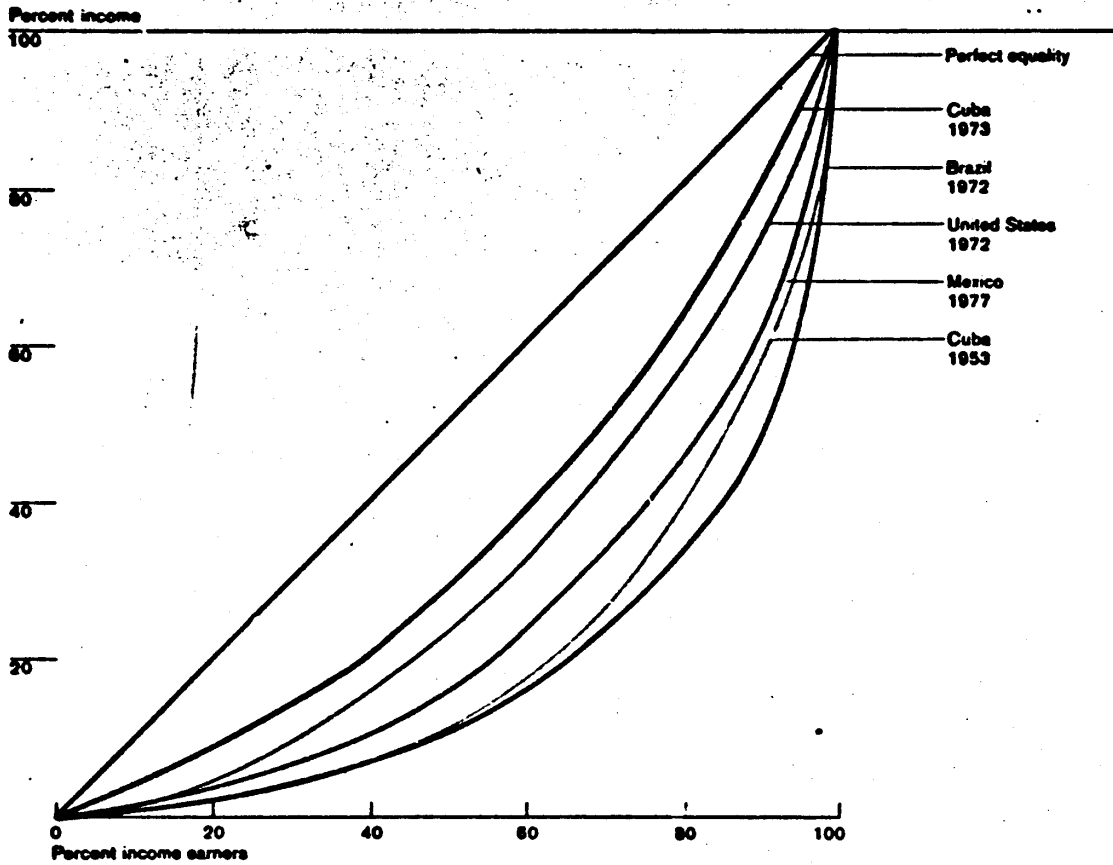
<sup>a</sup> Percentage shares of household income by percentile groups of households.

<sup>b</sup> In the case of Cuba, pre-Revolution and post-Revolution data are given as a rough indicator of income redistribution carried out by the Castro government.

Sources: *World Development Report* (World Bank, 1979), "Measuring Income Distribution in Pre- and Post-Revolutionary Cuba," by Claes Brundenius in *Cuban Studies* (July 1979).

**Figure 3**

**Comparison of Estimated Income Distribution**



58327112 80

**Table 61**

Kilowatt-Hours

**Per Capita Electricity Production, 1978**

Jamaica	1,318
Argentina	1,090
Cuba	876
Mexico	833
Costa Rica	800
Brazil	765
Philippines	357
India	164

Sources: *World Development Report* (World Bank, 1979), *Anuario Estadístico de Cuba* (1978), *National Basic Intelligence Factbook*, (Central Intelligence Agency, 1980).

**Table 62**

Kilograms

**Per Capita Grain Production, 1978\***

Mexico	257
LDC average	193
India	176
Philippines	166
Cuba	49
Jamaica	7

\* Crop year.

Source: *Production Yearbook* (FAO, 1978).**Table 63****Agricultural Yields, 1978**

	Sugarcane (kilograms per hectare)		Cane Milling (percent)		Rice (kilograms per hectare)
Mexico	71,875	Philippines	11.5	Mexico	3,286
Jamaica	61,777	Cuba	10.9	Argentina	3,263
India	56,415	Argentina	9.5	Cuba	2,091
Brazil	53,544	Jamaica	9.3	India	1,975
Cuba	56,000	Mexico	8.9	Philippines	1,838
Argentina	42,197	Brazil	6.0	Brazil	1,304
Philippines	41,427	India	3.9	Jamaica	1,000

Sources: *Production Yearbook* (FAO, 1978), *Anuario Estadístico de Cuba* (1978).

**International  
Relations**

**Table 64**

**Diplomatic Relations <sup>a</sup>**

	Year Established		Year Established		Year Established
<b>Communist countries</b>					
Albania	1960	Mozambique	1975	Belgium	prior to 1959
Bulgaria	After 1959	Niger	1976	Cyprus	1960
Czechoslovakia	1960	Nigeria	1974	Denmark	prior to 1959
East Germany	1963	Rwanda	1979	Finland	prior to 1959
Hungary	1960	Sao Tome and Principe	1976	France	prior to 1959
Laos	1974	Senegal	1974	Greece	prior to 1959
Mongolia	1960	Seychelles	1978	Iceland	prior to 1959
North Korea	1960	Sierra Leone	1972	Italy	prior to 1959
People's Republic of China	Prior to 1959	Sudan	1979	Luxembourg	prior to 1959
Poland	1960	Tanzania	1964	Malta	1977
Romania	1960	Togo	1979	Netherlands	prior to 1959
USSR	1960	Uganda	1974	Norway	reopened 1968
Vietnam	1960	Upper Volta	1975	Portugal	prior to 1959
		Zaire <sup>b</sup>	reestablished 1979	Spain	prior to 1959
		Zambia	1972	Sweden	prior to 1959
		Zimbabwe	1980	Switzerland	prior to 1959
<b>Non-Communist countries</b>					
<b>Africa</b>					
Algeria	1961	<b>Asia-Oceania</b>			
Angola	1975	Afghanistan	1975	Australia <sup>c</sup>	1973
Benin	1974	Australia <sup>c</sup>	1973	Bangladesh	1972
Botswana	1977	Burma	1976	Burma	1976
Burundi	1974	Hong Kong <sup>c</sup>	NA	Hong Kong <sup>c</sup>	NA
Cameroon	1974	India	prior to 1959	India	prior to 1959
Cape Verde	1975	Indonesia	NA	Indonesia	NA
Chad	1976	Iran	reestablished 1979	Iran	reestablished 1979
Comoros	1976	Iraq	1960	Iraq	1960
Congo	1964	Japan	prior to 1959	Japan	prior to 1959
Egypt	1960	Jordan <sup>d</sup>	1979	Jordan <sup>d</sup>	1979
Equatorial Guinea	1972	Kampuchea	reestablished 1975	Kampuchea	reestablished 1975
Ethiopia	1975	Kuwait	1974	Kuwait	1974
Gambia	1979	Lebanon	1960	Lebanon	1960
Ghana	reestablished 1974	Malaysia	1975	Malaysia	1975
Guinea	1960	Maldives	1977	Maldives	1977
Guinea-Bissau	1973	Nepal	1975	Nepal	1975
Lesotho	1979	Pakistan <sup>d</sup>	NA	Pakistan <sup>d</sup>	NA
Liberia	1974	Philippines	reestablished 1975	Philippines	reestablished 1975
Libya	1976	South Yemen	1972	South Yemen	1972
Madagascar	1974	Sri Lanka	1960	Sri Lanka	1960
Mali	1972	Syria	1965	Syria	1965
Mauritania	1972	Thailand	1963	Thailand	1963
Mauritius	1976	Europe		Europe	
		Austria	prior to 1959	Austria	prior to 1959
				Belgium	prior to 1959
				Cyprus	1960
				Denmark	prior to 1959
				Finland	prior to 1959
				France	prior to 1959
				Greece	prior to 1959
				Iceland	prior to 1959
				Italy	prior to 1959
				Luxembourg	prior to 1959
				Malta	1977
				Netherlands	prior to 1959
				Norway	reopened 1968
				Portugal	prior to 1959
				Spain	prior to 1959
				Sweden	prior to 1959
				Switzerland	prior to 1959
				The Vatican	prior to 1959
				Turkey	prior to 1959
				United Kingdom	prior to 1959
				West Germany	reestablished 1975
				Yugoslavia	1960
				<b>Western Hemisphere</b>	
				Argentina	reestablished 1973
				The Bahamas <sup>d</sup>	1974
				Barbados <sup>d</sup>	1972
				Canada	prior to 1959
				Colombia	reestablished 1975
				Costa Rica <sup>c</sup>	1977
				Dominica <sup>d</sup>	1980
				Ecuador	reestablished 1979
				Grenada	1979
				Guyana	1972
				Jamaica	1972
				Mexico	prior to 1959
				Nicaragua	reestablished 1979
				Panama	reestablished 1974
				Peru	reestablished 1972
				St. Lucia <sup>d</sup>	1979
				Suriname <sup>d</sup>	1979
				Trinidad and Tobago <sup>d</sup>	1972
				United States <sup>c</sup>	1977
				Venezuela	reestablished 1974

<sup>a</sup> Unless otherwise noted, there is an embassy in each of these countries.

<sup>b</sup> Established 1974, suspended 1977.

<sup>c</sup> Consular relations only.

<sup>d</sup> Relations at the ambassadorial level, but ambassador resides elsewhere.

<sup>e</sup> Special Interests Section.



**Table 65****Membership in International Organizations**

<b>United Nations (UN)</b>	
ECLA	Economic Commission for Latin America
FAO	Food and Agricultural Organization
GATT	General Agreement on Tariffs and Trade
IAEA	International Atomic Energy Agency
ICAO	International Civil Aviation Organization
ILO	International Labor Organization
IMCO	Intergovernmental Maritime Consultative Organization
ITU	International Telecommunication Union
UNCTAD	UN Conference on Trade and Development
UNDP	UN Development Program
UNESCO	UN Educational, Scientific, and Cultural Organization
UNIDO	UN Industrial Development Organization
UPU	Universal Postal Union
WHO	World Health Organization
WIPO	World Intellectual Property Organization
WMO	World Meteorological Organization
<b>Communist Organizations</b>	
CEMA	Council for Mutual Economic Assistance
IBEC	International Bank for Economic Cooperation
IIB	International Investment Bank
<b>Regional Organizations</b>	
NAMUCAR	Caribbean Multinational Shipping Enterprise
PAHO	Pan American Health Organization
SELA	Latin America Economic System
<b>Other</b>	
G77	Group of 77
IHO	International Hydrographic Organization
	International Rice Commission
ISO	International Sugar Organization
IWC	International Wheat Commission
NAM	Nonaligned Movement
	Permanent Court of Arbitration
	Postal Union of the Americas and Spain
WTO	World Tourism Organization

**END OF**

**FICHE**

**DATE FILMED**

APRIL 20, 1981

*D.S.*